

# U.S. Drought Monitor

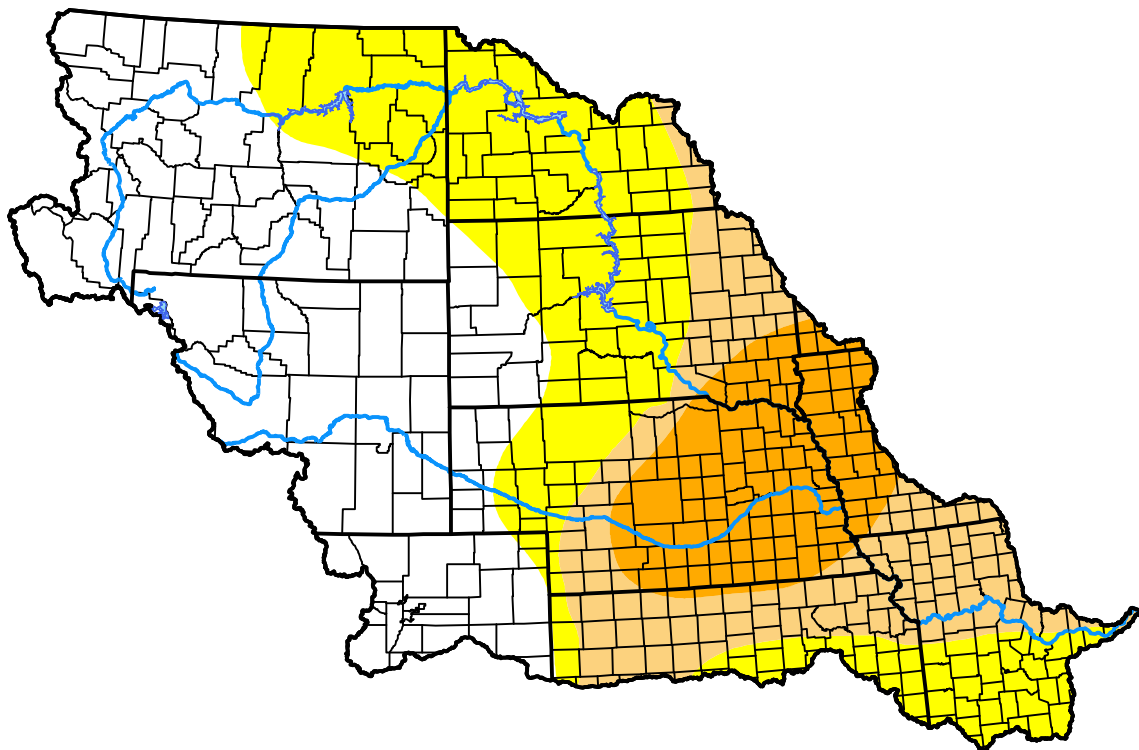
## Missouri Watershed

**February 15, 2000**  
*(Released Thursday, Feb. 17, 2000)*

Valid 7 a.m. EST

*Drought Conditions (Percent Area)*

	None	D0-D4	D1-D4	D2-D4	D3-D4	D4
<b>Current</b>	41.85	58.15	28.33	12.53	0.00	0.00
<b>Last Week</b> <i>02-10-2000</i>	41.85	58.15	28.33	12.53	0.00	0.00
<b>3 Months Ago</b>	-	-	-	-	-	-
<b>Start of Calendar Year</b> <i>01-06-2000</i>	48.52	51.48	16.12	8.39	0.00	0.00
<b>Start of Water Year</b>	-	-	-	-	-	-
<b>One Year Ago</b>	-	-	-	-	-	-



***Intensity:***

- None
- D0 Abnormally Dry
- D1 Moderate Drought
- D2 Severe Drought
- D3 Extreme Drought
- D4 Exceptional Drought

*The Drought Monitor focuses on broad-scale conditions. Local conditions may vary. For more information on the Drought Monitor, go to <https://droughtmonitor.unl.edu/About.aspx>*

***Author:***

Staff None  
 National Drought Mitigation Center

