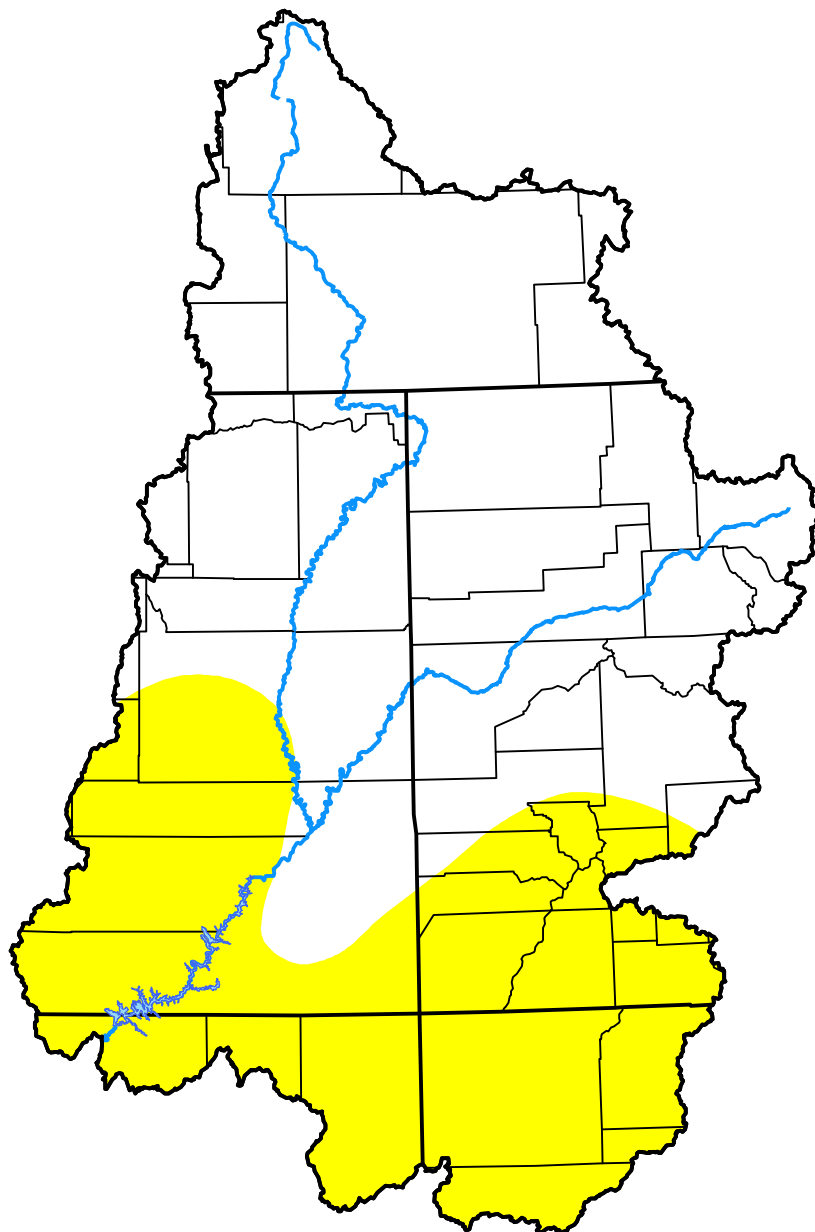


U.S. Drought Monitor

Upper Colorado Watershed

February 15, 2000
(Released Thursday, Feb. 17, 2000)
 Valid 7 a.m. EST



Drought Conditions (Percent Area)

	None	D0	D1	D2	D3	D4
Current	62.56	37.44	0.00	0.00	0.00	0.00
Last Week <i>02-10-2000</i>	48.95	51.05	0.00	0.00	0.00	0.00
3 Months Ago	-	-	-	-	-	-
Start of Calendar Year <i>01-06-2000</i>	100.00	0.00	0.00	0.00	0.00	0.00
Start of Water Year	-	-	-	-	-	-
One Year Ago	-	-	-	-	-	-

Intensity:

None	D2 Severe Drought
D0 Abnormally Dry	D3 Extreme Drought
D1 Moderate Drought	D4 Exceptional Drought

The Drought Monitor focuses on broad-scale conditions. Local conditions may vary. For more information on the Drought Monitor, go to <https://droughtmonitor.unl.edu/About.aspx>

Author:

Staff None
 National Drought Mitigation Center



droughtmonitor.unl.edu