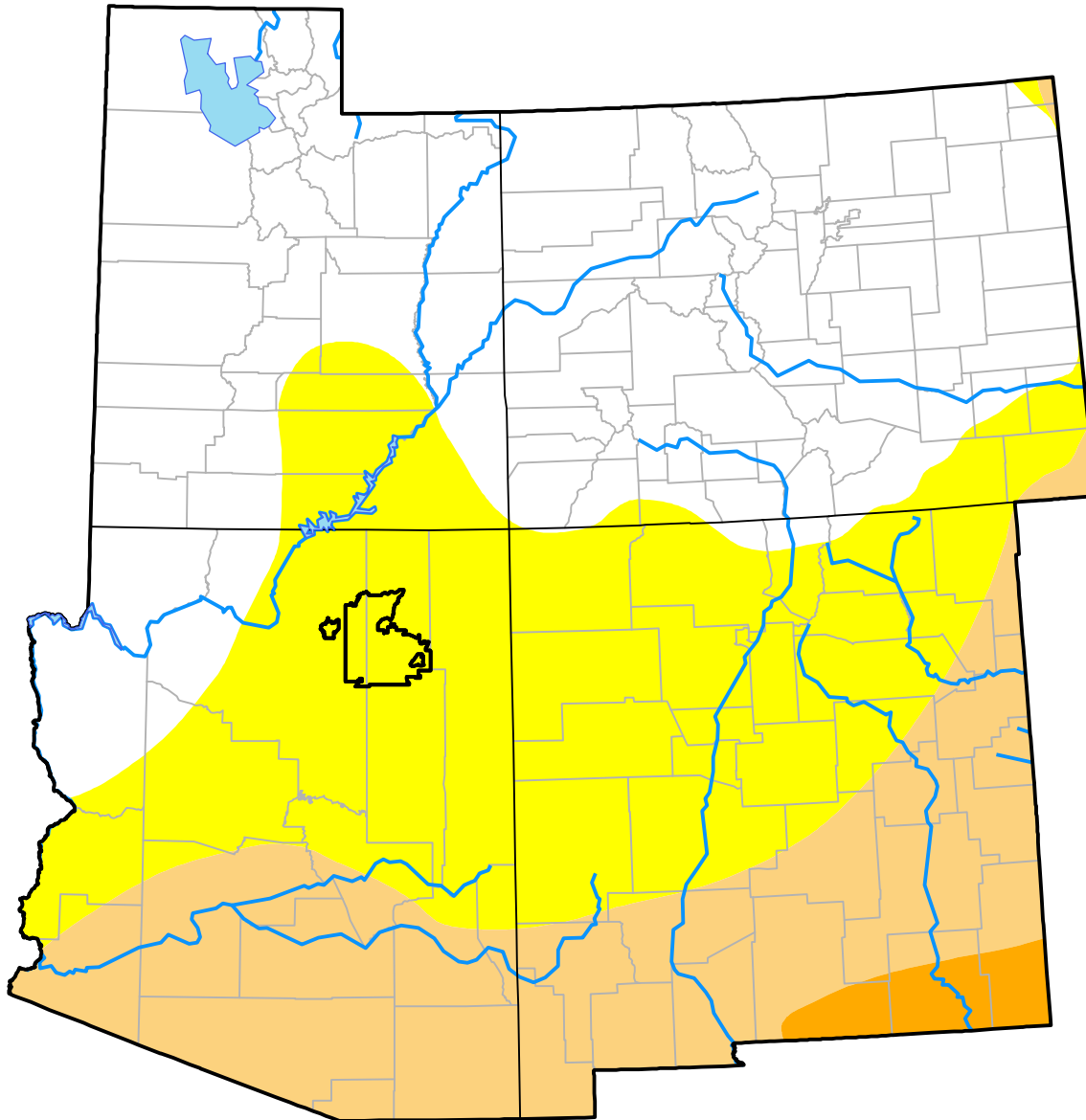


U.S. Drought Monitor

Hopi RDEWS

February 29, 2000
 (Released Thursday, Mar. 2, 2000)
 Valid 7 a.m. EST



Drought Conditions (Percent Area)

	None	D0-D4	D1-D4	D2-D4	D3-D4	D4
Current	0.00	100.00	0.00	0.00	0.00	0.00
Last Week <i>02-24-2000</i>	0.00	100.00	0.00	0.00	0.00	0.00
3 Months Ago	-	-	-	-	-	-
Start of Calendar Year <i>01-06-2000</i>	100.00	0.00	0.00	0.00	0.00	0.00
Start of Water Year	-	-	-	-	-	-
One Year Ago	-	-	-	-	-	-

Intensity:

- None
- D0 Abnormally Dry
- D1 Moderate Drought
- D2 Severe Drought
- D3 Extreme Drought
- D4 Exceptional Drought

The Drought Monitor focuses on broad-scale conditions. Local conditions may vary. For more information on the Drought Monitor, go to <https://droughtmonitor.unl.edu/About.aspx>

Author:

Staff None
 National Drought Mitigation Center

