

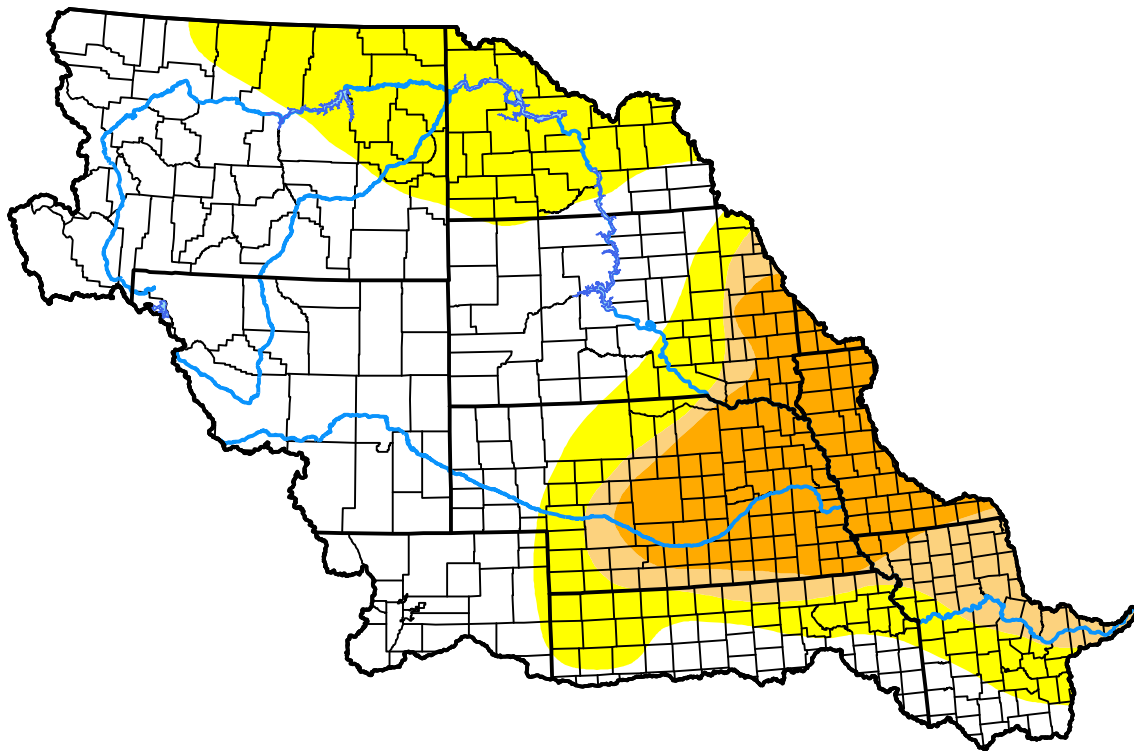
U.S. Drought Monitor

Missouri Watershed

March 14, 2000
(Released Thursday, Mar. 16, 2000)
 Valid 7 a.m. EST

Drought Conditions (Percent Area)

	None	D0	D1	D2	D3	D4
Current	55.53	24.80	7.01	12.67	0.00	0.00
Last Week <i>03-09-2000</i>	43.49	35.55	8.44	12.53	0.00	0.00
3 Months Ago	-	-	-	-	-	-
Start of Calendar Year <i>01-06-2000</i>	48.52	35.35	7.73	8.39	0.00	0.00
Start of Water Year	-	-	-	-	-	-
One Year Ago	-	-	-	-	-	-



Intensity:

- None
- D0 Abnormally Dry
- D1 Moderate Drought
- D2 Severe Drought
- D3 Extreme Drought
- D4 Exceptional Drought

The Drought Monitor focuses on broad-scale conditions. Local conditions may vary. For more information on the Drought Monitor, go to <https://droughtmonitor.unl.edu/About.aspx>

Author:

Staff None
 National Drought Mitigation Center



droughtmonitor.unl.edu