

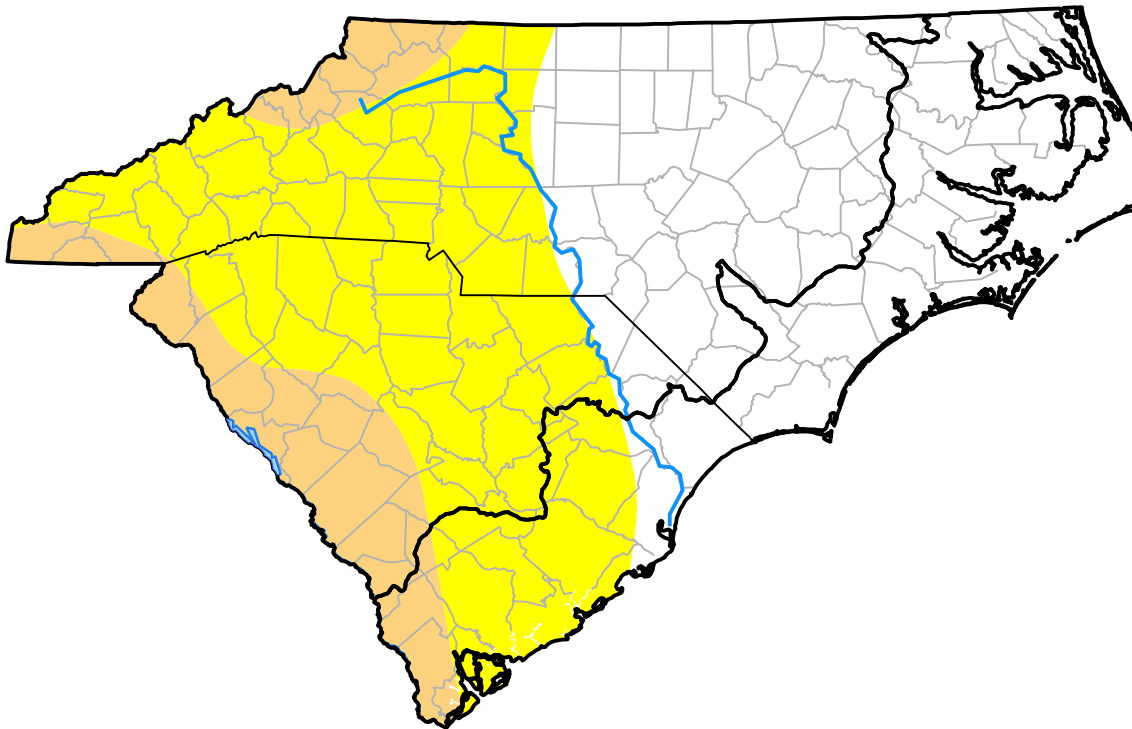
Carolinas RDEWS and Surrounding Areas

(Released Thursday, Apr. 13, 2000)

10:00 a.m. EDT

Drought Conditions (Percent Area)

	None	D0	D1	D2	D3	D4
Current	44.71	41.38	13.91	0.00	0.00	0.00
Last Week <i>04-06-2000</i>	44.10	46.84	9.05	0.00	0.00	0.00
3 Months Ago <i>01-13-2000</i>	45.11	36.94	17.95	0.00	0.00	0.00
Start of Calendar Year <i>01-06-2000</i>	41.01	32.14	26.85	0.00	0.00	0.00
Start of Water Year	-	-	-	-	-	-
One Year Ago	-	-	-	-	-	-



Intensity:

- None
- D0 Abnormally Dry
- D1 Moderate Drought
- D2 Severe Drought
- D3 Extreme Drought
- D4 Exceptional Drought

The Drought Monitor focuses on broad-scale conditions. Local conditions may vary. For more information on the Drought Monitor, go to <https://droughtmonitor.unl.edu/About.aspx>

Author:

Staff None
National Drought Mitigation Center

