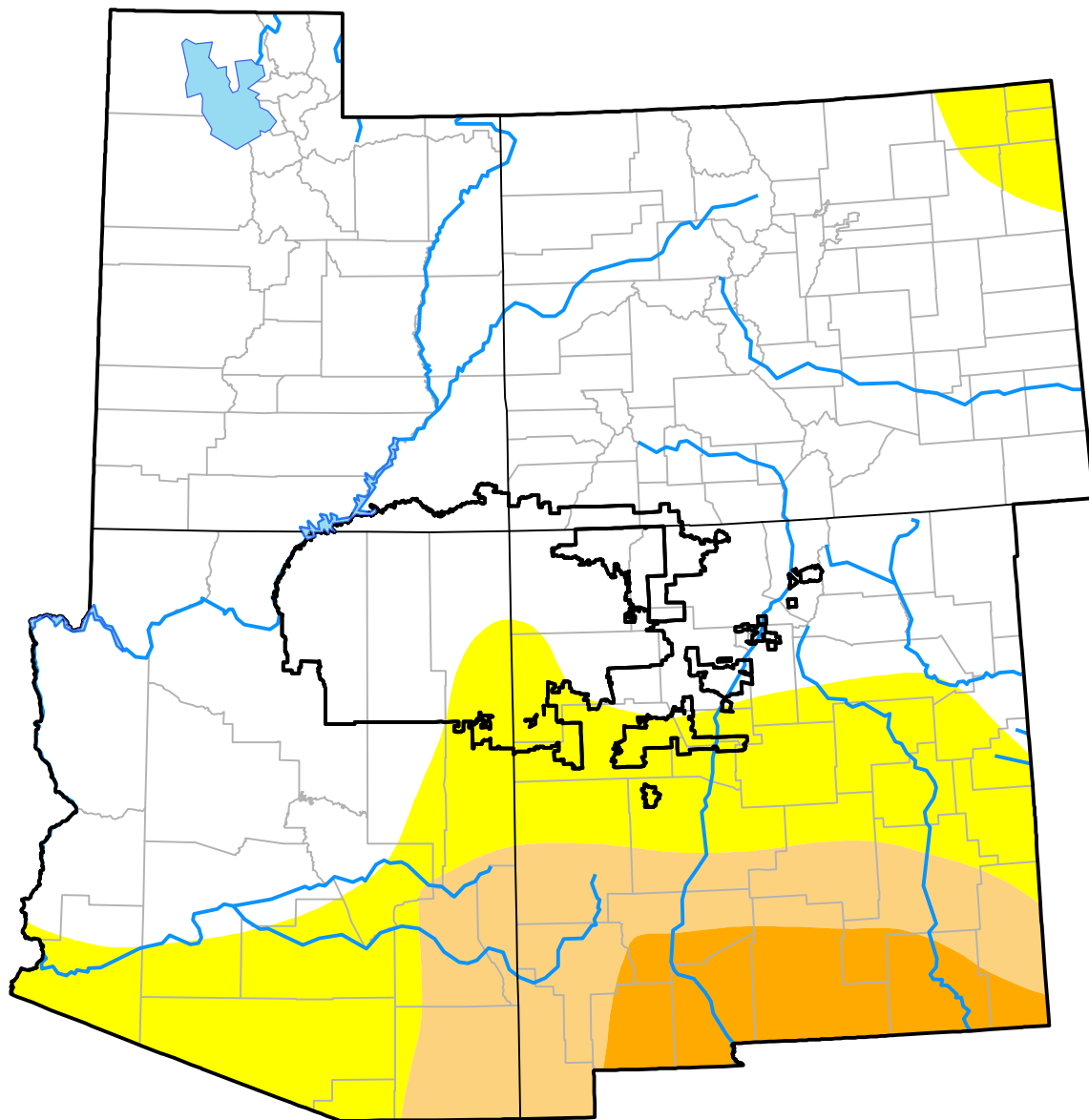


U.S. Drought Monitor

Four Corners RDEWS

April 18, 2000
(Released Thursday, Apr. 20, 2000)
 Valid 8 a.m. EDT



Drought Conditions (Percent Area)

	None	D0	D1	D2	D3	D4
Current	80.49	19.51	0.00	0.00	0.00	0.00
Last Week <i>04-13-2000</i>	83.96	16.04	0.00	0.00	0.00	0.00
3 Months Ago <i>01-20-2000</i>	0.00	100.00	0.00	0.00	0.00	0.00
Start of Calendar Year <i>01-06-2000</i>	96.09	3.91	0.00	0.00	0.00	0.00
Start of Water Year	-	-	-	-	-	-
One Year Ago	-	-	-	-	-	-

Intensity:

- None
- D0 Abnormally Dry
- D1 Moderate Drought
- D2 Severe Drought
- D3 Extreme Drought
- D4 Exceptional Drought

The Drought Monitor focuses on broad-scale conditions. Local conditions may vary. For more information on the Drought Monitor, go to <https://droughtmonitor.unl.edu/About.aspx>

Author:

Staff None
 National Drought Mitigation Center

