

U.S. Drought Monitor

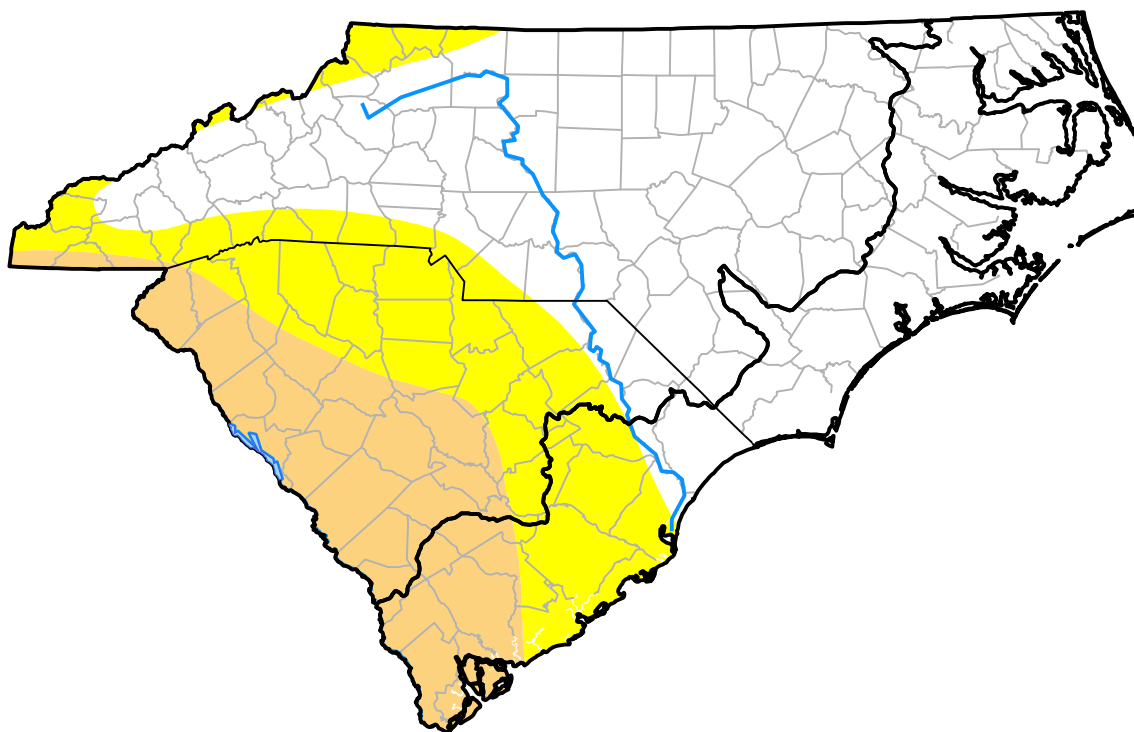
Coastal Carolinas RDEWS

April 18, 2000
 (Released Thursday, Apr. 20, 2000)

Valid 8 a.m. EDT

Drought Conditions (Percent Area)

| | None | D0-D4 | D1-D4 | D2-D4 | D3-D4 | D4 |
|--|-------|-------|-------|-------|-------|------|
| Current | 65.49 | 34.51 | 16.60 | 0.00 | 0.00 | 0.00 |
| Last Week <i>04-13-2000</i> | 68.83 | 31.17 | 5.05 | 0.00 | 0.00 | 0.00 |
| 3 Months Ago <i>01-20-2000</i> | 78.71 | 21.29 | 3.90 | 0.00 | 0.00 | 0.00 |
| Start of Calendar Year <i>01-06-2000</i> | 76.26 | 23.74 | 4.26 | 0.00 | 0.00 | 0.00 |
| Start of Water Year | - | - | - | - | - | - |
| One Year Ago | - | - | - | - | - | - |



Intensity:

- None
- D0 Abnormally Dry
- D1 Moderate Drought
- D2 Severe Drought
- D3 Extreme Drought
- D4 Exceptional Drought

The Drought Monitor focuses on broad-scale conditions. Local conditions may vary. For more information on the Drought Monitor, go to <https://droughtmonitor.unl.edu/About.aspx>

Author:

Staff None
 National Drought Mitigation Center



droughtmonitor.unl.edu