

U.S. Drought Monitor

Lower Mississippi Watershed

May 9, 2000

(Released Thursday, May. 11, 2000)

Valid 8 a.m. EDT

Drought Conditions (Percent Area)

	None	D0	D1	D2	D3	D4
Current	31.48	38.07	11.37	6.13	12.95	0.00
Last Week <i>05-04-2000</i>	24.95	32.83	19.31	9.95	12.95	0.00
3 Months Ago <i>02-10-2000</i>	0.00	23.60	24.10	52.31	0.00	0.00
Start of Calendar Year <i>01-06-2000</i>	1.27	38.97	42.23	17.53	0.00	0.00
Start of Water Year	-	-	-	-	-	-
One Year Ago	-	-	-	-	-	-

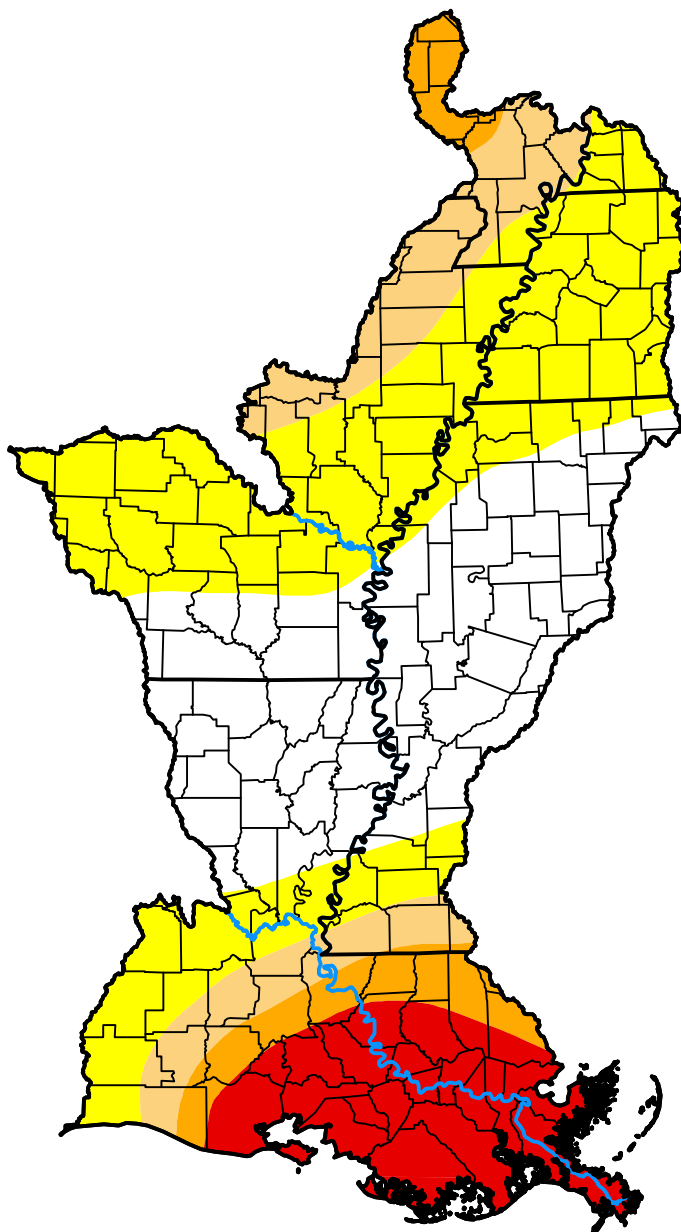
Intensity:

 None	 D2 Severe Drought
 D0 Abnormally Dry	 D3 Extreme Drought
 D1 Moderate Drought	 D4 Exceptional Drought

The Drought Monitor focuses on broad-scale conditions. Local conditions may vary. For more information on the Drought Monitor, go to <https://droughtmonitor.unl.edu/About.aspx>

Author:

Staff None
National Drought Mitigation Center



droughtmonitor.unl.edu