

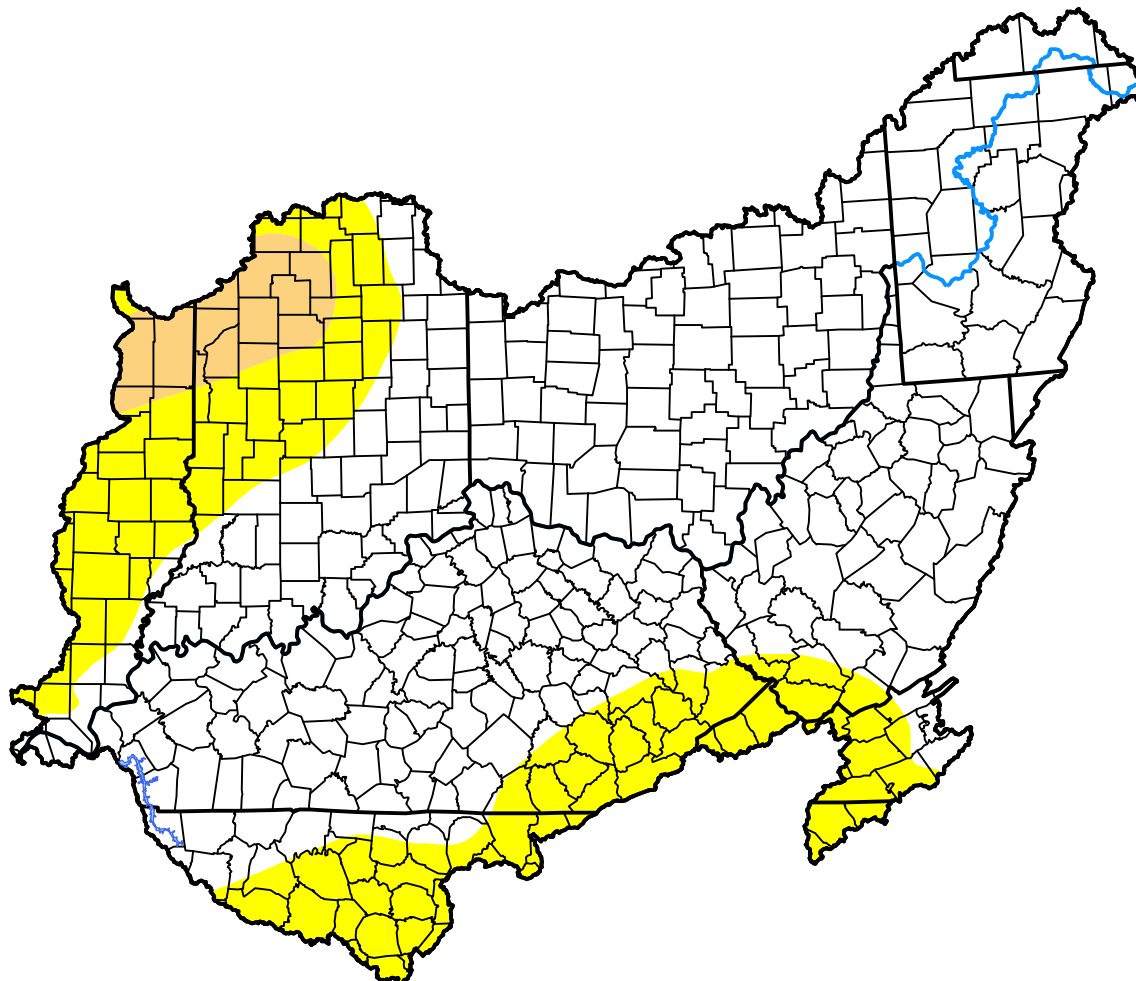
U.S. Drought Monitor

Ohio Watershed

May 30, 2000
 (Released Thursday, Jun. 1, 2000)
 Valid 8 a.m. EDT

Drought Conditions (Percent Area)

	None	D0	D1	D2	D3	D4
Current	75.26	21.14	3.59	0.00	0.00	0.00
Last Week <i>05-25-2000</i>	69.43	24.08	6.38	0.11	0.00	0.00
3 Months Ago <i>03-02-2000</i>	61.89	16.20	16.78	5.13	0.00	0.00
Start of Calendar Year <i>01-06-2000</i>	20.85	14.73	56.64	7.78	0.00	0.00
Start of Water Year	-	-	-	-	-	-
One Year Ago	-	-	-	-	-	-



Intensity:

- None
- D0 Abnormally Dry
- D1 Moderate Drought
- D2 Severe Drought
- D3 Extreme Drought
- D4 Exceptional Drought

The Drought Monitor focuses on broad-scale conditions. Local conditions may vary. For more information on the Drought Monitor, go to <https://droughtmonitor.unl.edu/About.aspx>

Author:

Staff None
 National Drought Mitigation Center

