

# U.S. Drought Monitor

## Lower Mississippi Watershed

June 13, 2000

(Released Thursday, Jun. 15, 2000)

Valid 8 a.m. EDT

Drought Conditions (Percent Area)

	None	D0	D1	D2	D3	D4
<b>Current</b>	61.04	13.17	4.84	7.13	4.50	9.32
<b>Last Week</b> <i>06-08-2000</i>	63.35	11.29	4.03	7.42	5.38	8.53
<b>3 Months Ago</b> <i>03-16-2000</i>	7.33	10.71	18.74	63.22	0.00	0.00
<b>Start of Calendar Year</b> <i>01-06-2000</i>	1.27	38.97	42.23	17.53	0.00	0.00
<b>Start of Water Year</b>	-	-	-	-	-	-
<b>One Year Ago</b>	-	-	-	-	-	-

### Intensity:

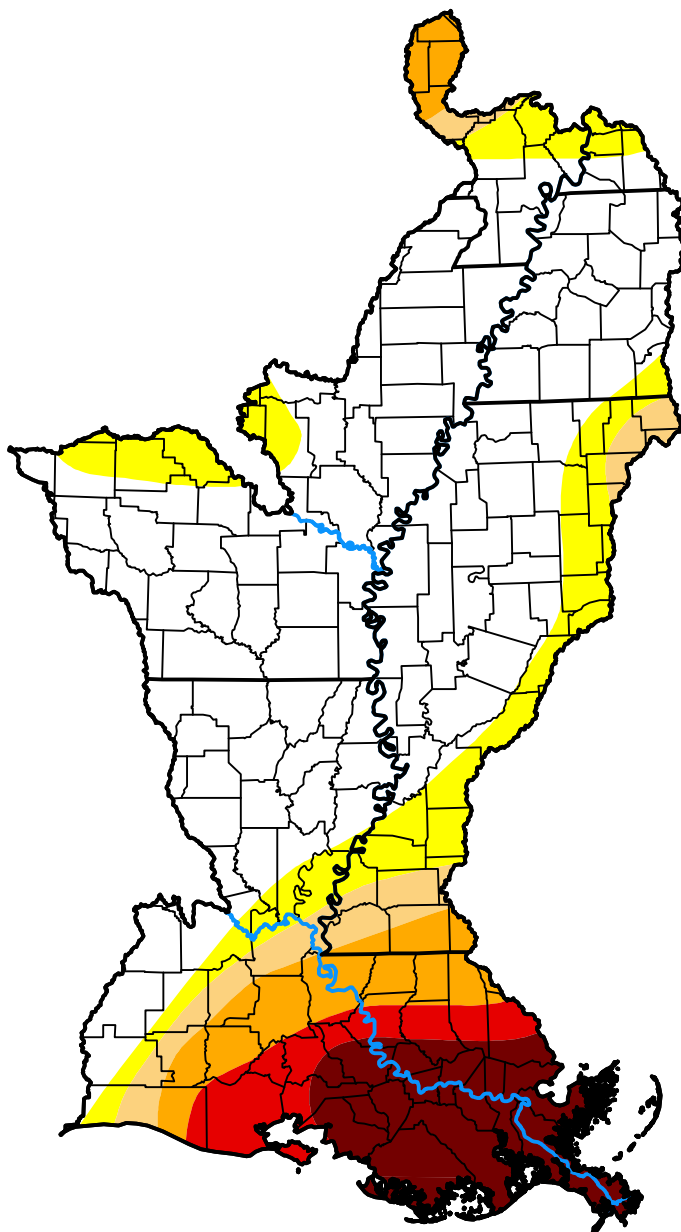
 None	 D2 Severe Drought
 D0 Abnormally Dry	 D3 Extreme Drought
 D1 Moderate Drought	 D4 Exceptional Drought

The Drought Monitor focuses on broad-scale conditions. Local conditions may vary. For more information on the Drought Monitor, go to <https://droughtmonitor.unl.edu/About.aspx>

### Author:

Staff None

National Drought Mitigation Center



[droughtmonitor.unl.edu](https://droughtmonitor.unl.edu)