

U.S. Drought Monitor

Lower Mississippi Watershed

June 13, 2000

(Released Thursday, Jun. 15, 2000)

Valid 8 a.m. EDT

Drought Conditions (Percent Area)

	None	D0-D4	D1-D4	D2-D4	D3-D4	D4
Current	61.04	38.96	25.79	20.95	13.82	9.32
Last Week <i>06-08-2000</i>	63.35	36.65	25.35	21.32	13.91	8.53
3 Months Ago <i>03-16-2000</i>	7.33	92.67	81.96	63.22	0.00	0.00
Start of Calendar Year <i>01-06-2000</i>	1.27	98.73	59.76	17.53	0.00	0.00
Start of Water Year	-	-	-	-	-	-
One Year Ago	-	-	-	-	-	-

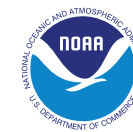
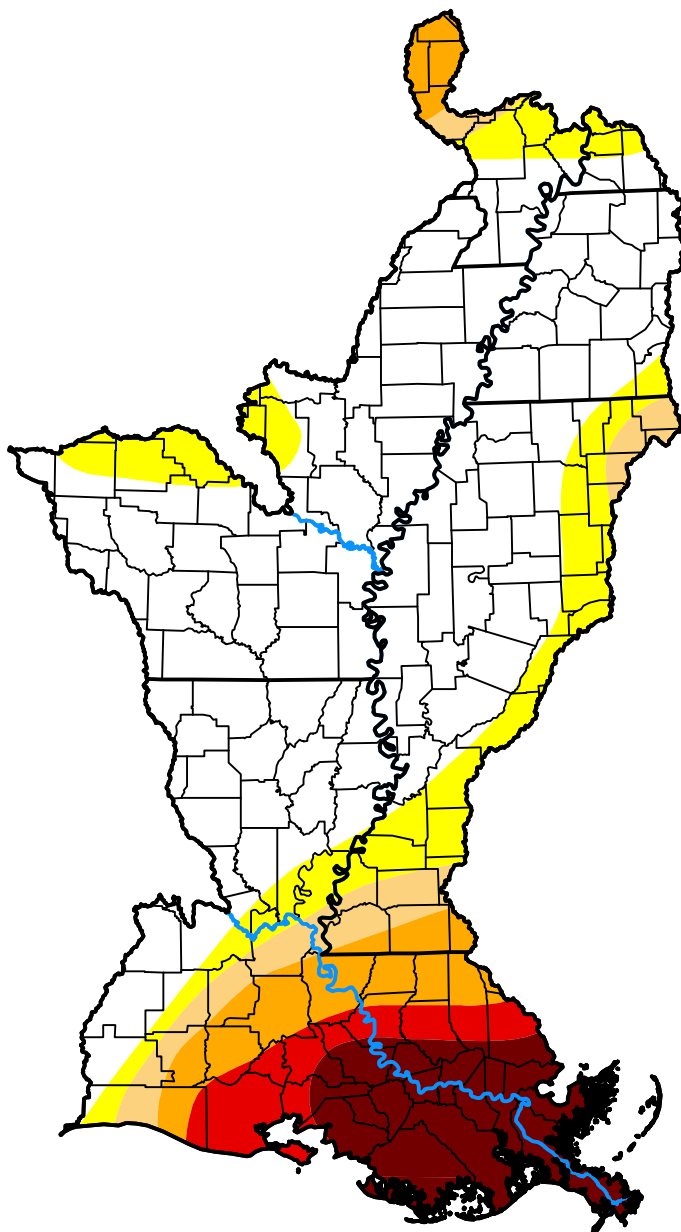
Intensity:

 None	 D2 Severe Drought
 D0 Abnormally Dry	 D3 Extreme Drought
 D1 Moderate Drought	 D4 Exceptional Drought

The Drought Monitor focuses on broad-scale conditions. Local conditions may vary. For more information on the Drought Monitor, go to <https://droughtmonitor.unl.edu/About.aspx>

Author:

Staff None
National Drought Mitigation Center



droughtmonitor.unl.edu