

# U.S. Drought Monitor

## Pacific Northwest Watershed

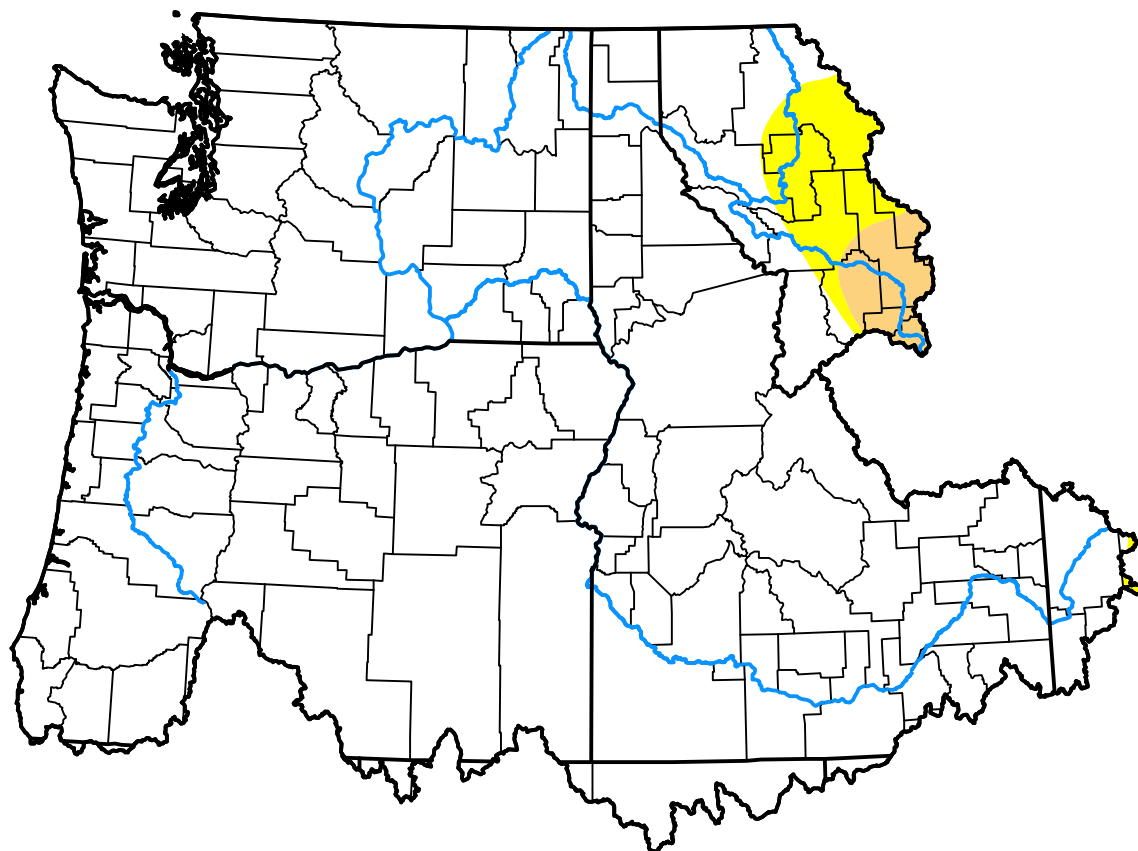
June 13, 2000

(Released Thursday, Jun. 15, 2000)

Valid 8 a.m. EDT

Drought Conditions (Percent Area)

	None	D0-D4	D1-D4	D2-D4	D3-D4	D4
<b>Current</b>	95.66	4.34	1.45	0.00	0.00	0.00
<b>Last Week</b> 06-08-2000	95.63	4.37	1.46	0.00	0.00	0.00
<b>3 Months Ago</b> 03-16-2000	100.00	0.00	0.00	0.00	0.00	0.00
<b>Start of Calendar Year</b> 01-06-2000	99.27	0.73	0.00	0.00	0.00	0.00
<b>Start of Water Year</b>	-	-	-	-	-	-
<b>One Year Ago</b>	-	-	-	-	-	-



### Intensity:

None	D2 Severe Drought
D0 Abnormally Dry	D3 Extreme Drought
D1 Moderate Drought	D4 Exceptional Drought

The Drought Monitor focuses on broad-scale conditions. Local conditions may vary. For more information on the Drought Monitor, go to <https://droughtmonitor.unl.edu/About.aspx>

### Author:

Staff None  
National Drought Mitigation Center



[droughtmonitor.unl.edu](https://droughtmonitor.unl.edu)