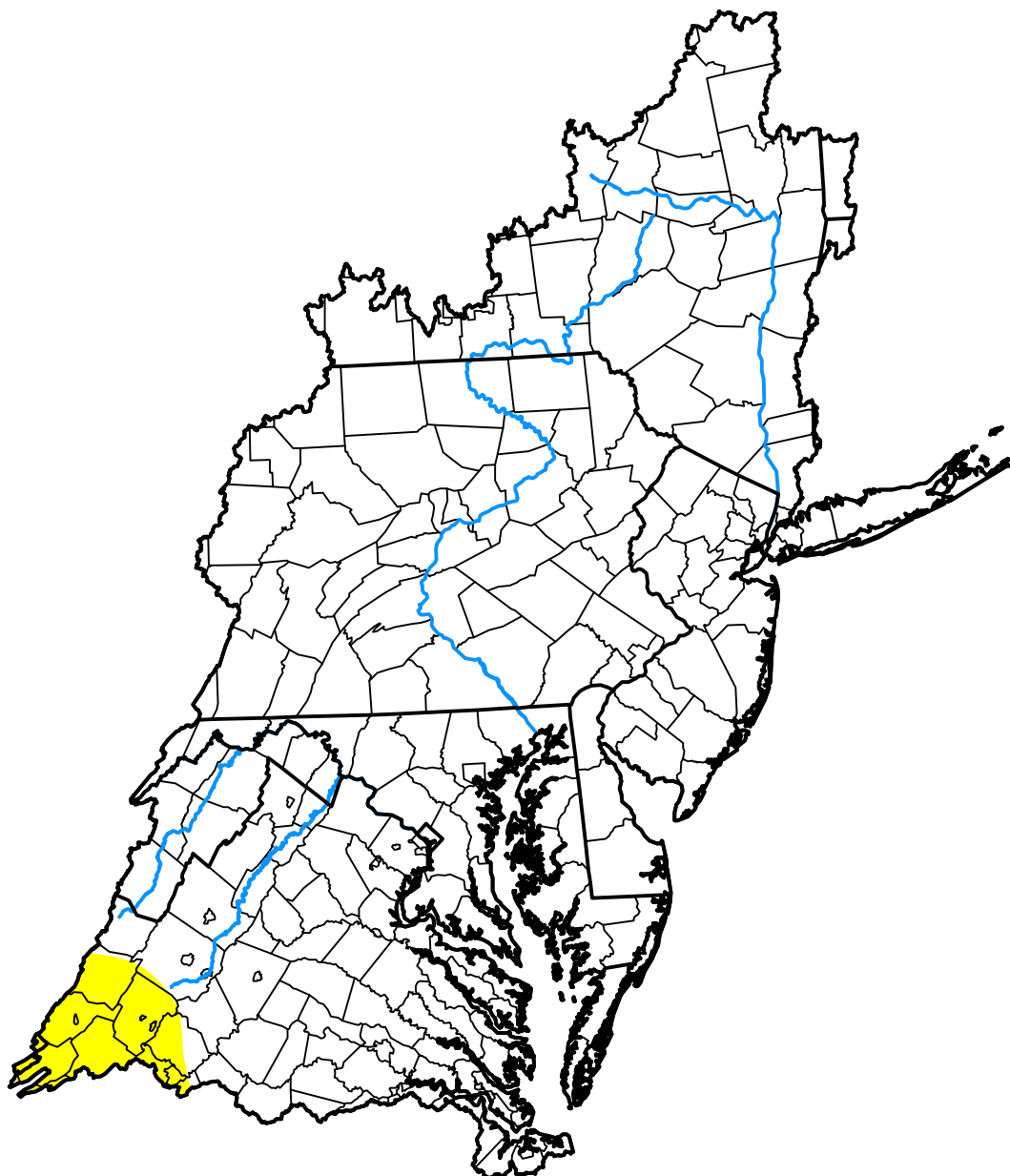


U.S. Drought Monitor

Mid Atlantic Watershed

June 27, 2000
 (Released Thursday, Jun. 29, 2000)
 Valid 8 a.m. EDT



Drought Conditions (Percent Area)

	None	D0	D1	D2	D3	D4
Current	96.96	3.02	0.02	0.00	0.00	0.00
Last Week <i>06-22-2000</i>	99.91	0.09	0.00	0.00	0.00	0.00
3 Months Ago <i>03-30-2000</i>	89.58	10.42	0.00	0.00	0.00	0.00
Start of Calendar Year <i>01-06-2000</i>	94.33	5.67	0.00	0.00	0.00	0.00
Start of Water Year	-	-	-	-	-	-
One Year Ago	-	-	-	-	-	-

Intensity:

None	D2 Severe Drought
D0 Abnormally Dry	D3 Extreme Drought
D1 Moderate Drought	D4 Exceptional Drought

The Drought Monitor focuses on broad-scale conditions. Local conditions may vary. For more information on the Drought Monitor, go to <https://droughtmonitor.unl.edu/About.aspx>

Author:

Staff None
 National Drought Mitigation Center



droughtmonitor.unl.edu