

# U.S. Drought Monitor

## Pacific Northwest Watershed

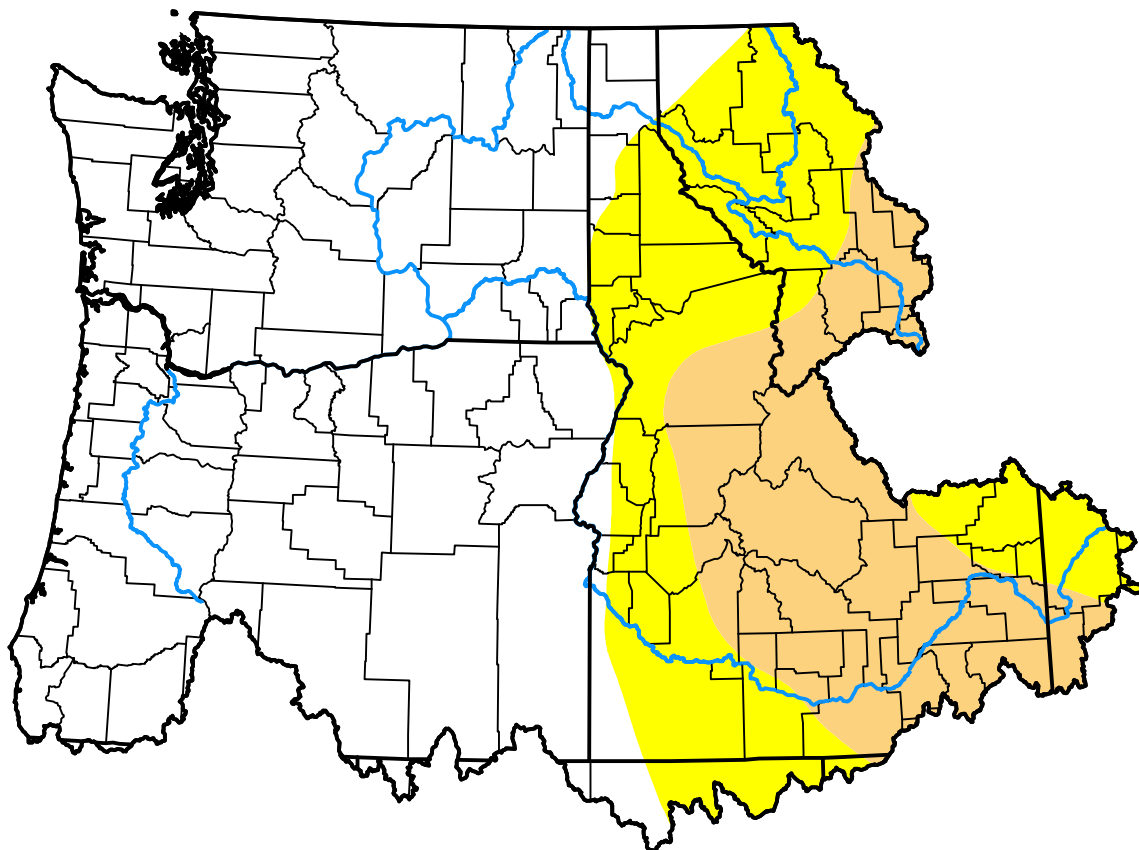
July 25, 2000

(Released Thursday, Jul. 27, 2000)

Valid 8 a.m. EDT

Drought Conditions (Percent Area)

	None	D0	D1	D2	D3	D4
<b>Current</b>	61.80	20.82	17.38	0.00	0.00	0.00
<b>Last Week</b> 07-20-2000	60.75	21.87	17.38	0.00	0.00	0.00
<b>3 Months Ago</b> 04-27-2000	97.75	2.25	0.00	0.00	0.00	0.00
<b>Start of Calendar Year</b> 01-06-2000	99.27	0.73	0.00	0.00	0.00	0.00
<b>Start of Water Year</b>	-	-	-	-	-	-
<b>One Year Ago</b>	-	-	-	-	-	-



### Intensity:

None	D2 Severe Drought
D0 Abnormally Dry	D3 Extreme Drought
D1 Moderate Drought	D4 Exceptional Drought

The Drought Monitor focuses on broad-scale conditions. Local conditions may vary. For more information on the Drought Monitor, go to <https://droughtmonitor.unl.edu/About.aspx>

### Author:

Staff None  
National Drought Mitigation Center



[droughtmonitor.unl.edu](https://droughtmonitor.unl.edu)