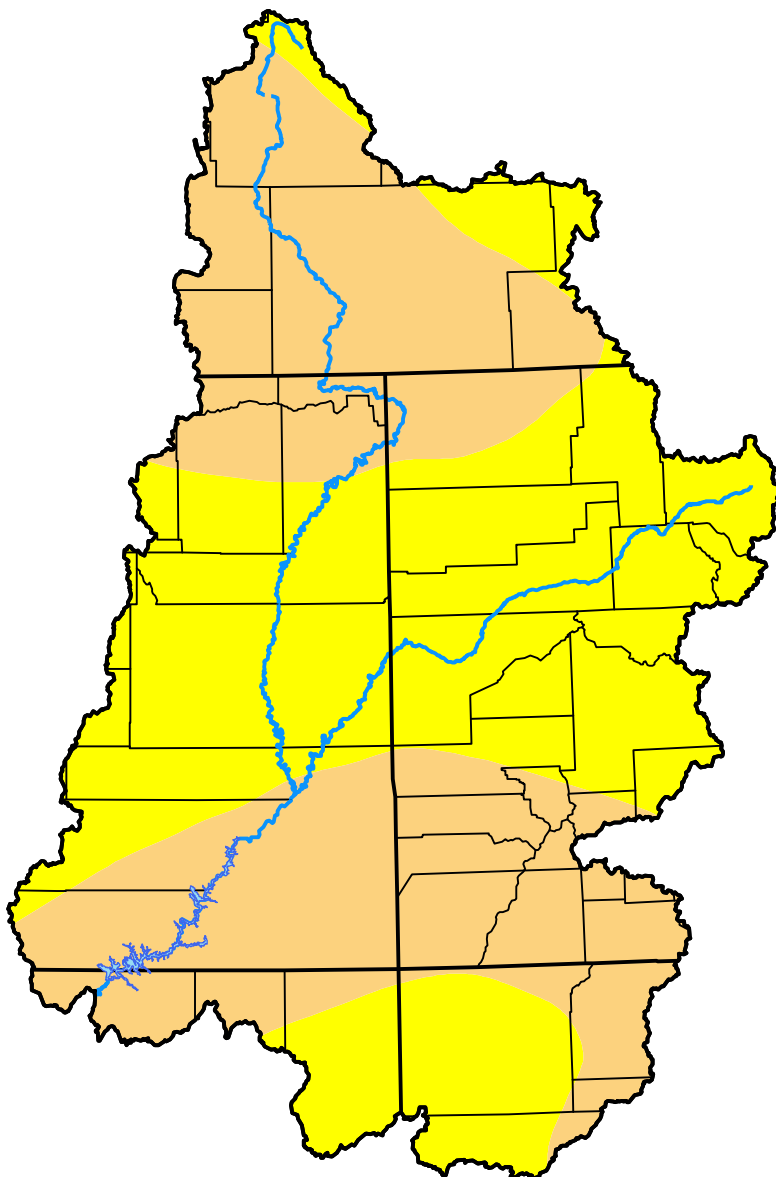


# U.S. Drought Monitor

## Upper Colorado Watershed

**August 1, 2000**  
(Released Thursday, Aug. 3, 2000)  
Valid 8 a.m. EDT



### Intensity:



*The Drought Monitor focuses on broad-scale conditions. Local conditions may vary. For more information on the Drought Monitor, go to <https://droughtmonitor.unl.edu/About.aspx>*

### Author:

Staff None  
National Drought Mitigation Center



**droughtmonitor.unl.edu**