

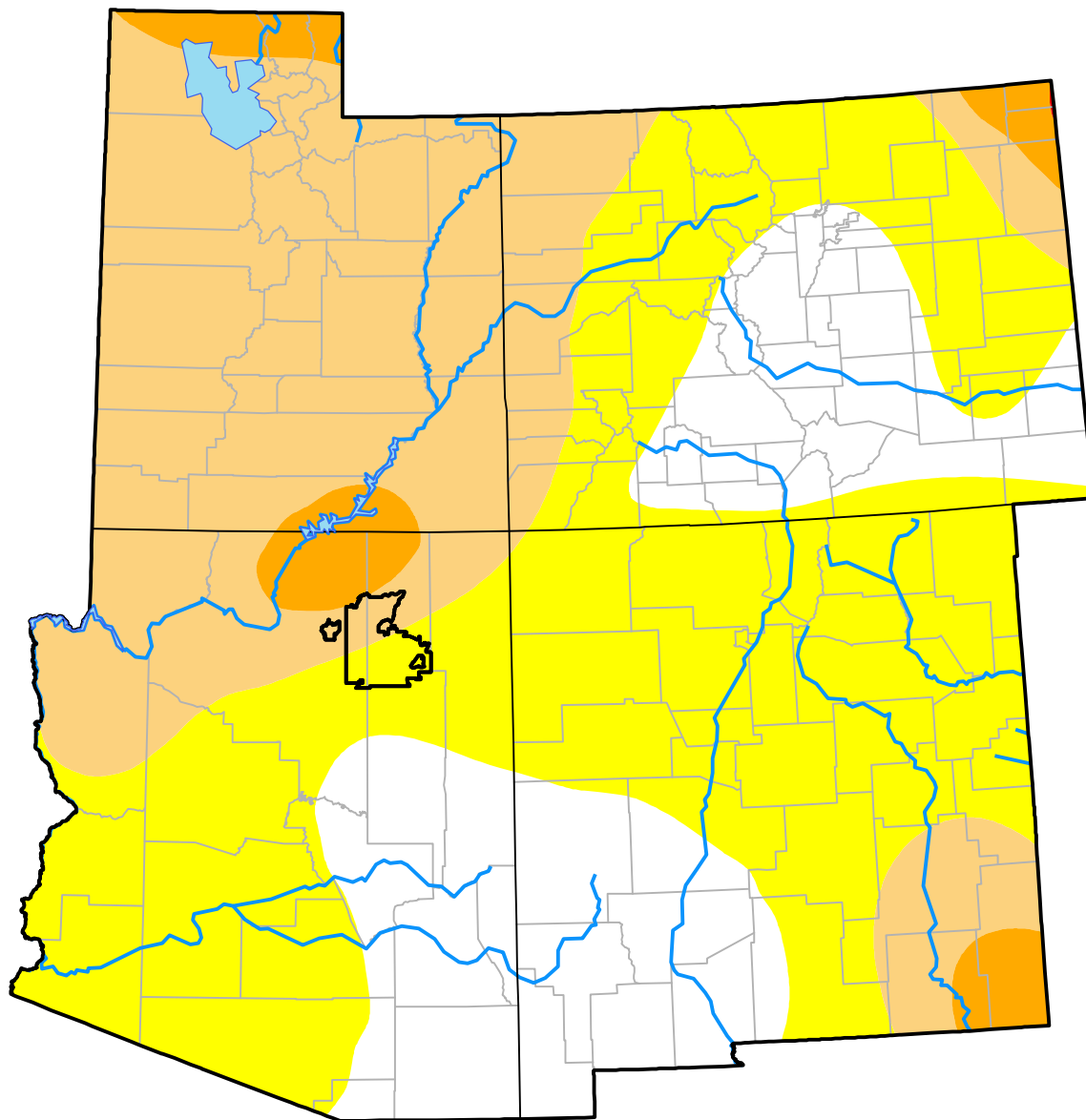
# Opportunity RDEWS and Surrounding Areas

(Released Thursday, Aug. 31, 2000)

Valid 8 a.m. EDT

Drought Conditions (Percent Area)

	None	D0	D1	D2	D3	D4
<b>Current</b>	22.06	42.70	31.34	3.89	0.01	0.00
<b>Last Week</b> <i>08-24-2000</i>	33.54	31.99	30.37	4.09	0.01	0.00
<b>3 Months Ago</b> <i>06-01-2000</i>	54.11	14.63	14.71	12.76	3.79	0.00
<b>Start of Calendar Year</b> <i>01-06-2000</i>	69.87	29.64	0.46	0.03	0.00	0.00
<b>Start of Water Year</b>	-	-	-	-	-	-
<b>One Year Ago</b>	-	-	-	-	-	-



**Intensity:**

- None
- D0 Abnormally Dry
- D1 Moderate Drought
- D2 Severe Drought
- D3 Extreme Drought
- D4 Exceptional Drought

The Drought Monitor focuses on broad-scale conditions. Local conditions may vary. For more information on the Drought Monitor, go to <https://droughtmonitor.unl.edu/About.aspx>

**Author:**

Staff None  
National Drought Mitigation Center

