

U.S. Drought Monitor

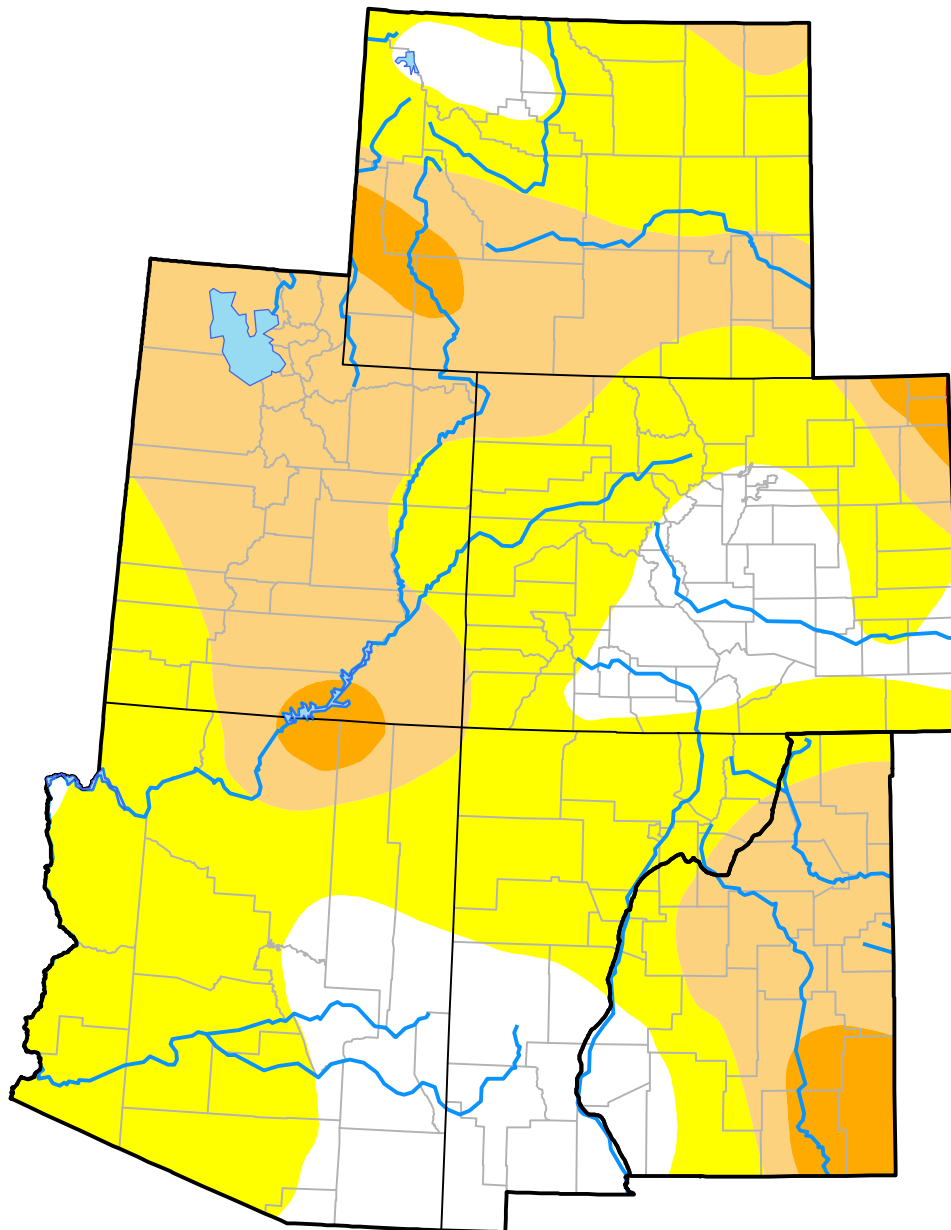
Intermountain West RDEWS

September 5, 2000
 (Released Thursday, Sep. 7, 2000)

Valid 8 a.m. EDT

Drought Conditions (Percent Area)

	None	D0-D4	D1-D4	D2-D4	D3-D4	D4
Current	18.93	81.07	33.77	4.18	0.01	0.00
Last Week <i>08-31-2000</i>	18.88	81.12	37.22	4.65	0.01	0.00
3 Months Ago <i>06-08-2000</i>	48.33	51.67	26.81	13.25	3.05	0.00
Start of Calendar Year <i>01-06-2000</i>	75.51	24.49	0.40	0.02	0.00	0.00
Start of Water Year	-	-	-	-	-	-
One Year Ago	-	-	-	-	-	-



Intensity:

- None
- D0 Abnormally Dry
- D1 Moderate Drought
- D2 Severe Drought
- D3 Extreme Drought
- D4 Exceptional Drought

The Drought Monitor focuses on broad-scale conditions. Local conditions may vary. For more information on the Drought Monitor, go to <https://droughtmonitor.unl.edu/About.aspx>

Author:

Staff None
 National Drought Mitigation Center



droughtmonitor.unl.edu