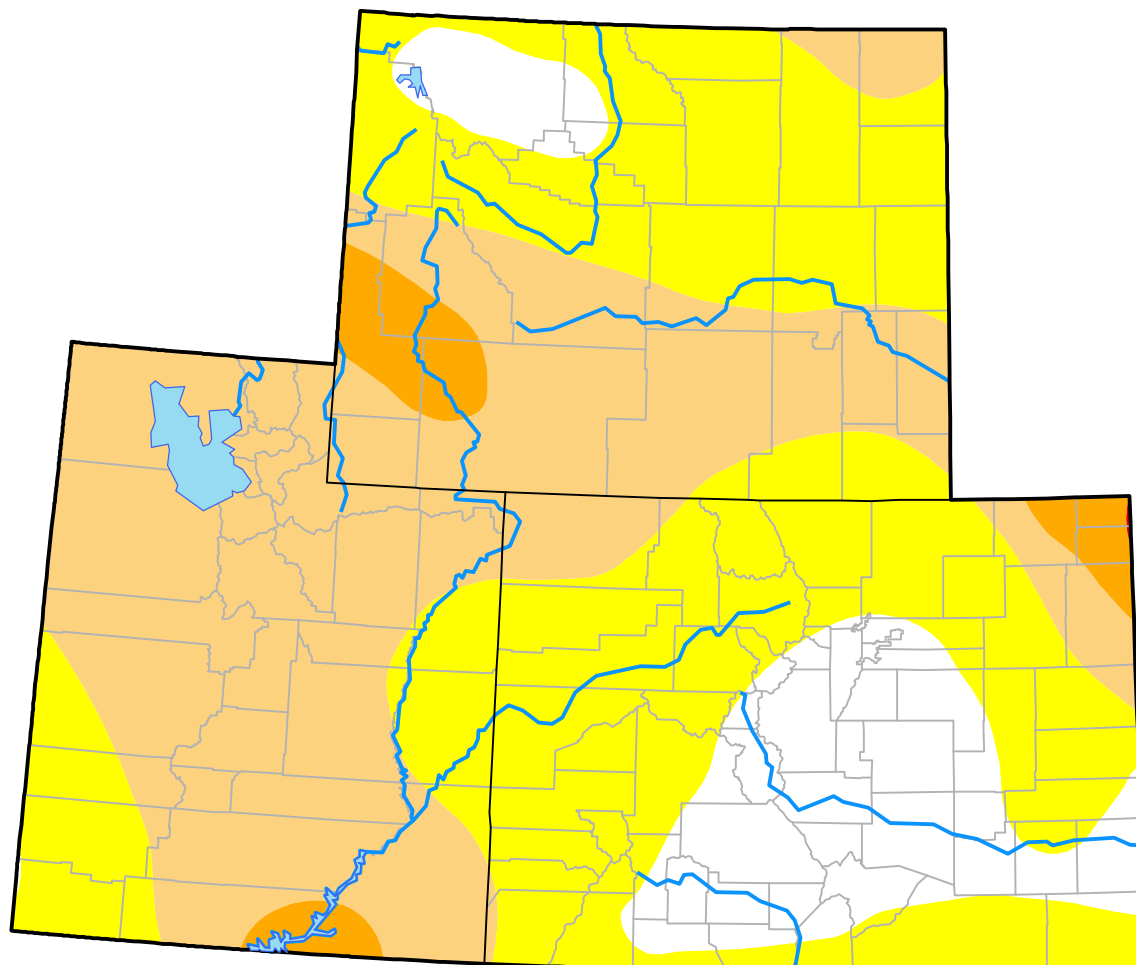


Drought Conditions (Percent Area)

	None	D0-D4	D1-D4	D2-D4	D3-D4	D4
Current	13.91	86.09	43.35	3.50	0.02	0.00
Last Week <i>08-31-2000</i>	13.97	86.03	52.51	5.60	0.02	0.00
3 Months Ago <i>06-08-2000</i>	76.19	23.81	0.00	0.00	0.00	0.00
Start of Calendar Year <i>01-06-2000</i>	98.84	1.16	0.00	0.00	0.00	0.00
Start of Water Year	-	-	-	-	-	-
One Year Ago	-	-	-	-	-	-



Intensity:



The Drought Monitor focuses on broad-scale conditions. Local conditions may vary. For more information on the Drought Monitor, go to <https://droughtmonitor.unl.edu/About.aspx>

Author:

Staff None
National Drought Mitigation Center

