

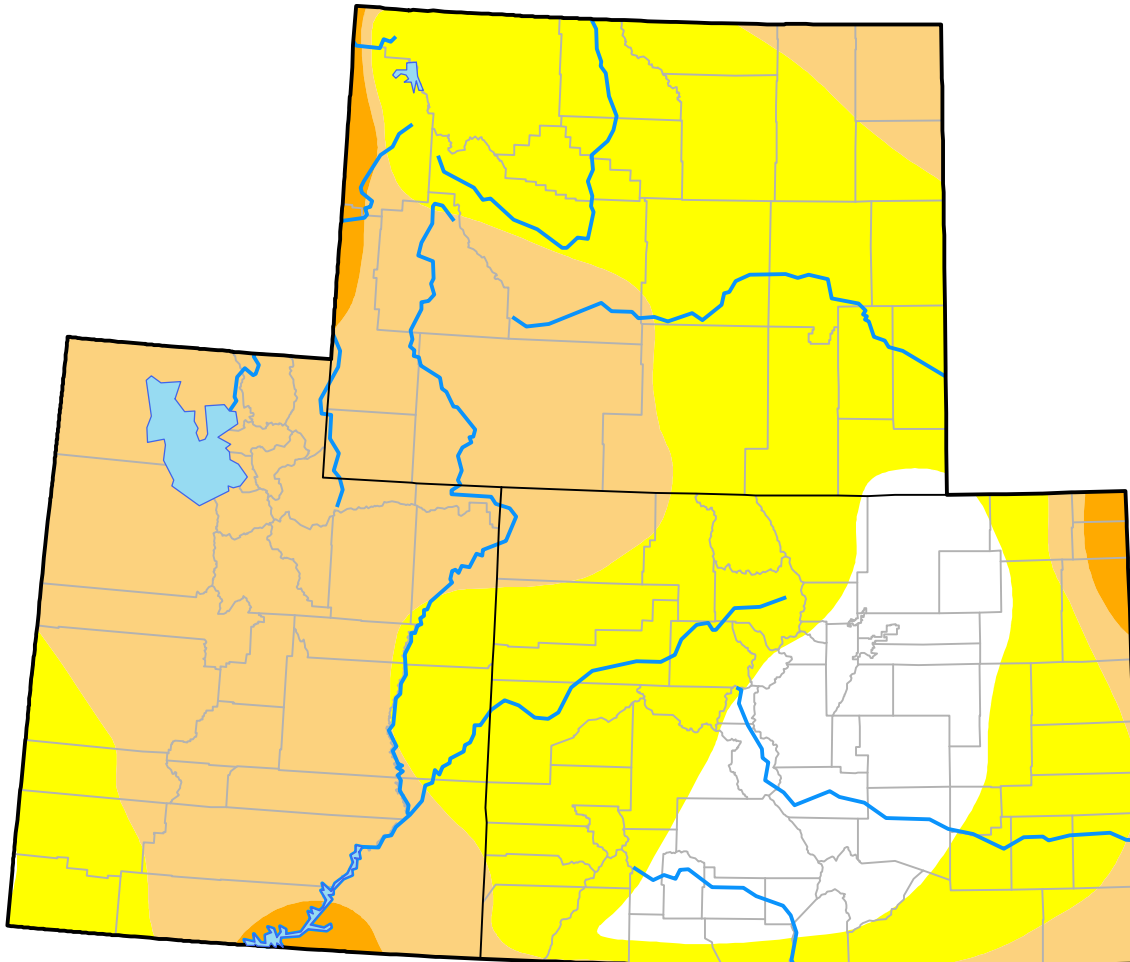
Upper Colorado River Basin RDEWS

(Released Thursday, Oct. 12, 2000)

Valid 8 a.m. EDT

Drought Conditions (Percent Area)

	None	D0-D4	D1-D4	D2-D4	D3-D4	D4
Current	12.71	87.29	40.85	1.94	0.00	0.00
Last Week <i>10-05-2000</i>	12.71	87.29	41.16	2.20	0.00	0.00
3 Months Ago <i>07-13-2000</i>	4.74	95.26	28.57	1.20	0.01	0.00
Start of Calendar Year <i>01-06-2000</i>	98.84	1.16	0.00	0.00	0.00	0.00
Start of Water Year <i>09-28-2000</i>	10.69	89.31	40.37	2.20	0.00	0.00
One Year Ago	-	-	-	-	-	-



Intensity:

- None
- D0 Abnormally Dry
- D1 Moderate Drought
- D2 Severe Drought
- D3 Extreme Drought
- D4 Exceptional Drought

The Drought Monitor focuses on broad-scale conditions. Local conditions may vary. For more information on the Drought Monitor, go to <https://droughtmonitor.unl.edu/About.aspx>

Author:

Staff None
National Drought Mitigation Center

