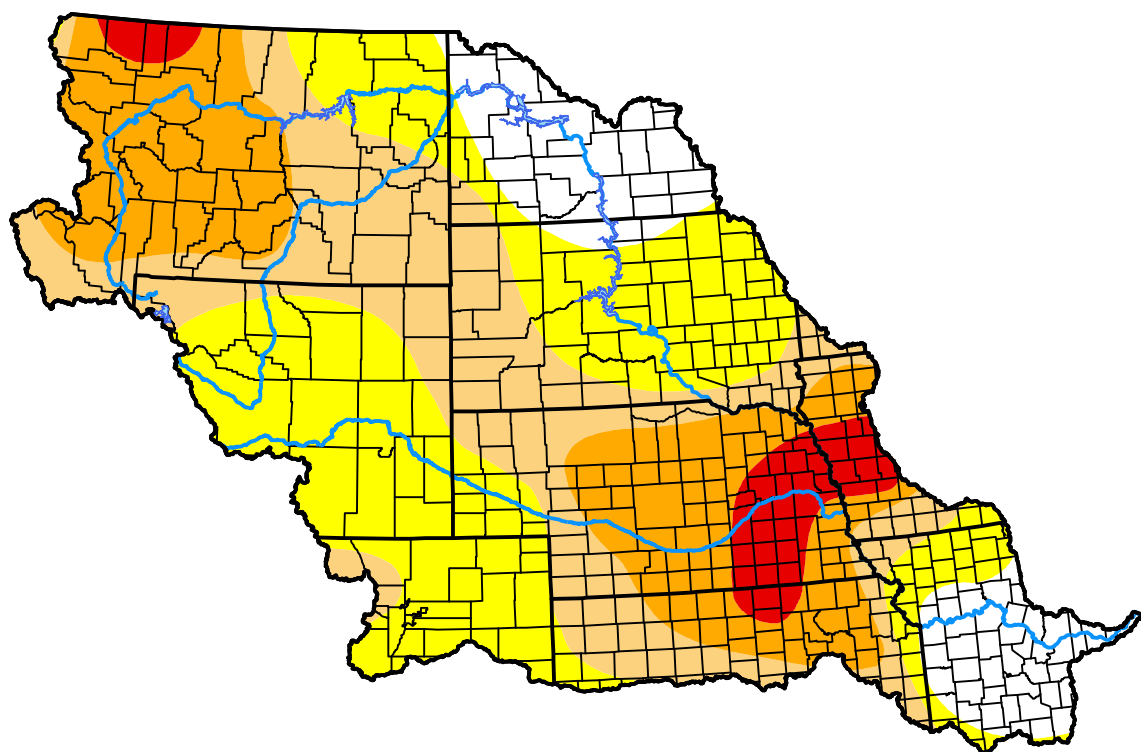


U.S. Drought Monitor Missouri Watershed

October 24, 2000
(Released Thursday, Oct. 26, 2000)
Valid 8 a.m. EDT



Drought Conditions (Percent Area)

	None	D0-D4	D1-D4	D2-D4	D3-D4	D4
Current	12.58	87.42	53.57	26.37	4.91	0.00
Last Week <i>10-19-2000</i>	19.84	80.16	48.06	26.19	3.56	0.00
3 Months Ago <i>07-27-2000</i>	41.06	58.94	27.23	5.52	1.01	0.00
Start of Calendar Year <i>01-06-2000</i>	48.52	51.48	16.12	8.39	0.00	0.00
Start of Water Year <i>09-28-2000</i>	22.99	77.01	42.11	28.39	2.95	0.00
One Year Ago	-	-	-	-	-	-

Intensity:

None	D2 Severe Drought
D0 Abnormally Dry	D3 Extreme Drought
D1 Moderate Drought	D4 Exceptional Drought

The Drought Monitor focuses on broad-scale conditions. Local conditions may vary. For more information on the Drought Monitor, go to <https://droughtmonitor.unl.edu/About.aspx>

Author:

Staff None
National Drought Mitigation Center



droughtmonitor.unl.edu