

U.S. Drought Monitor

Pacific Northwest Watershed

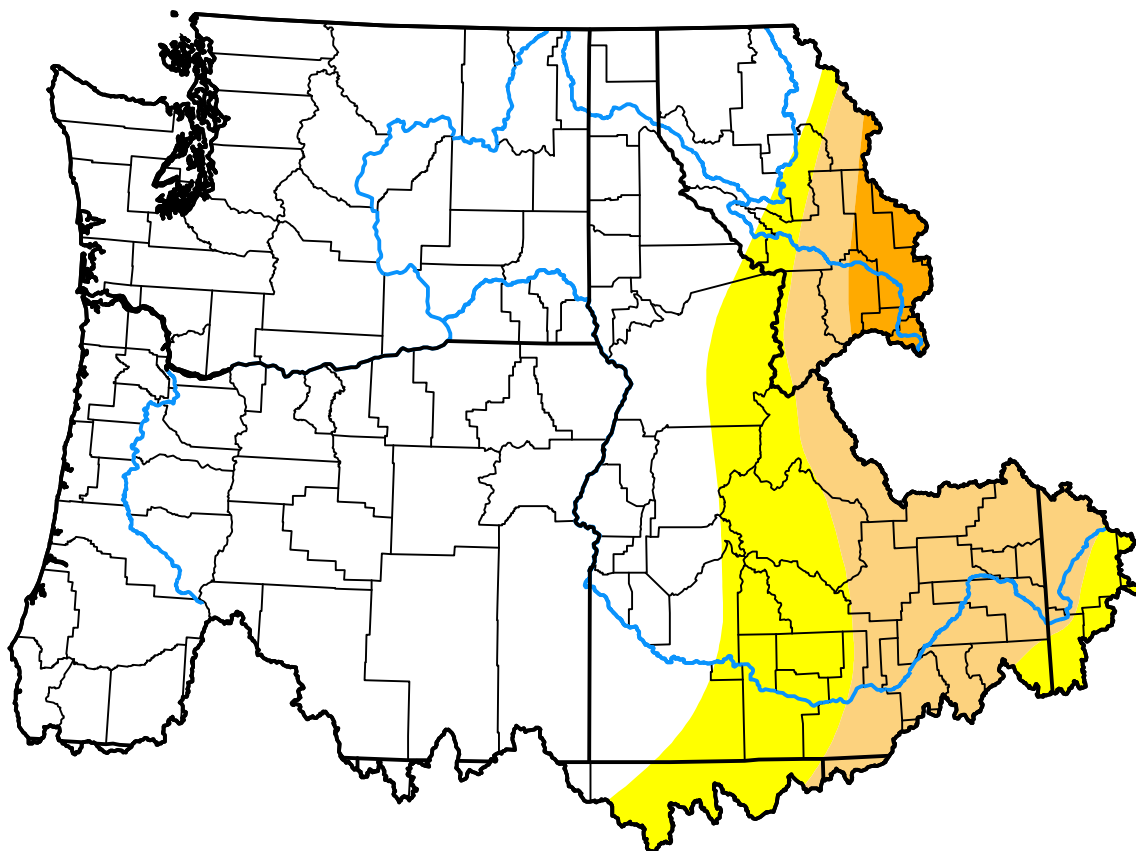
October 24, 2000

(Released Thursday, Oct. 26, 2000)

Valid 8 a.m. EDT

Drought Conditions (Percent Area)

	None	D0-D4	D1-D4	D2-D4	D3-D4	D4
Current	74.79	25.21	13.05	1.72	0.00	0.00
Last Week <i>10-19-2000</i>	69.49	30.51	22.16	1.34	0.00	0.00
3 Months Ago <i>07-27-2000</i>	61.80	38.20	17.38	0.00	0.00	0.00
Start of Calendar Year <i>01-06-2000</i>	99.27	0.73	0.00	0.00	0.00	0.00
Start of Water Year <i>09-28-2000</i>	61.44	38.56	23.72	7.34	0.76	0.00
One Year Ago	-	-	-	-	-	-



Intensity:

None	D2 Severe Drought
D0 Abnormally Dry	D3 Extreme Drought
D1 Moderate Drought	D4 Exceptional Drought

The Drought Monitor focuses on broad-scale conditions. Local conditions may vary. For more information on the Drought Monitor, go to <https://droughtmonitor.unl.edu/About.aspx>

Author:

Staff None
National Drought Mitigation Center



droughtmonitor.unl.edu