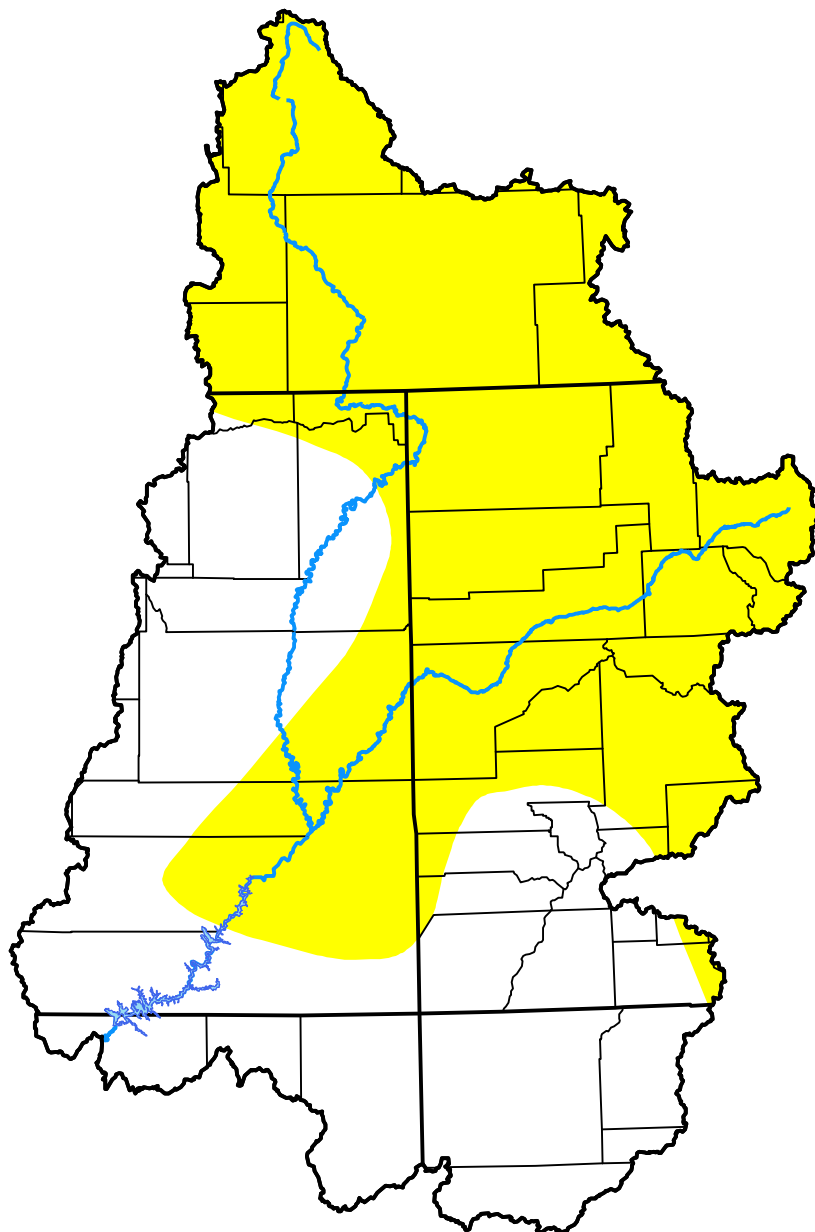


# U.S. Drought Monitor

## Upper Colorado Watershed

**November 7, 2000**  
 (Released Thursday, Nov. 9, 2000)

Valid 7 a.m. EST



*Drought Conditions (Percent Area)*

	None	D0	D1	D2	D3	D4
<b>Current</b>	43.78	56.22	0.00	0.00	0.00	0.00
<b>Last Week</b> <i>11-02-2000</i>	11.89	72.99	15.12	0.00	0.00	0.00
<b>3 Months Ago</b> <i>08-10-2000</i>	0.00	48.67	51.33	0.00	0.00	0.00
<b>Start of Calendar Year</b> <i>01-06-2000</i>	100.00	0.00	0.00	0.00	0.00	0.00
<b>Start of Water Year</b> <i>09-28-2000</i>	3.04	43.27	50.08	3.61	0.00	0.00
<b>One Year Ago</b>	-	-	-	-	-	-

*Intensity:*

- None
- D0 Abnormally Dry
- D1 Moderate Drought
- D2 Severe Drought
- D3 Extreme Drought
- D4 Exceptional Drought

*The Drought Monitor focuses on broad-scale conditions. Local conditions may vary. For more information on the Drought Monitor, go to <https://droughtmonitor.unl.edu/About.aspx>*

*Author:*

Staff None  
 National Drought Mitigation Center

