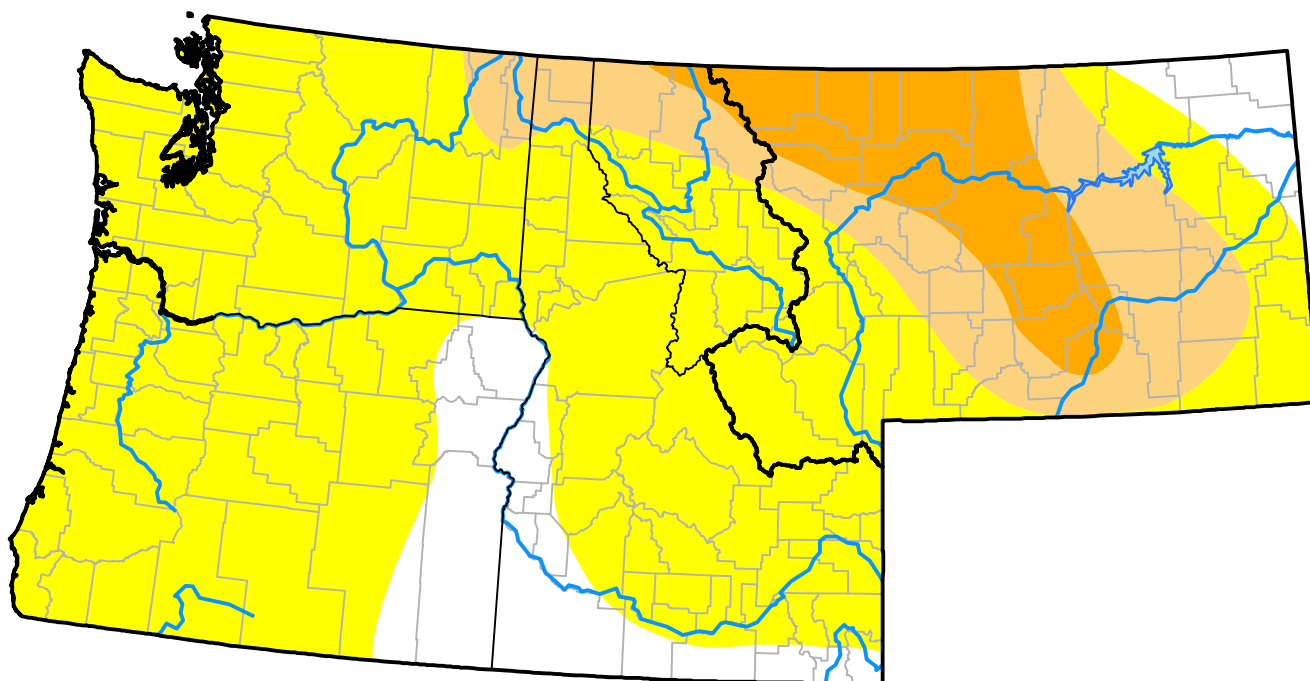


U.S. Drought Monitor

Pacific Northwest RDEWS

January 30, 2001
(Released Thursday, Feb. 1, 2001)
Valid 7 a.m. EST



Intensity:

-  None
-  D0 Abnormally Dry
-  D1 Moderate Drought
-  D2 Severe Drought
-  D3 Extreme Drought
-  D4 Exceptional Drought

The Drought Monitor focuses on broad-scale conditions. Local conditions may vary. For more information on the Drought Monitor, go to <https://droughtmonitor.unl.edu/About.aspx>

Author:

Douglas Le Comte
CPC/NOAA



droughtmonitor.unl.edu