

# U.S. Drought Monitor

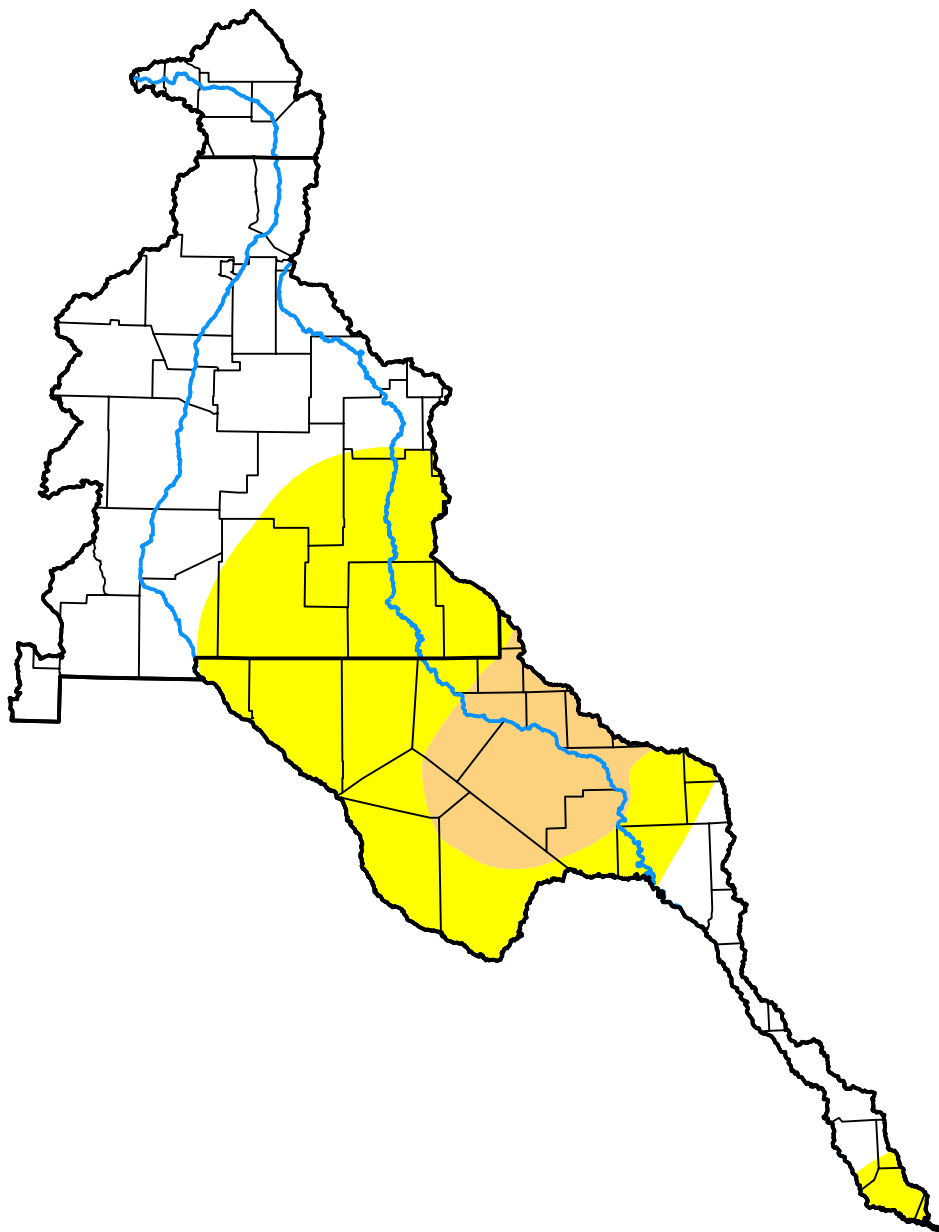
## Rio Grande Watershed

**February 6, 2001**  
 (Released Thursday, Feb. 8, 2001)

Valid 7 a.m. EST

*Drought Conditions (Percent Area)*

	None	D0-D4	D1-D4	D2-D4	D3-D4	D4
<b>Current</b>	51.70	48.30	11.53	0.00	0.00	0.00
<b>Last Week</b> <i>02-01-2001</i>	50.38	49.62	12.43	0.00	0.00	0.00
<b>3 Months Ago</b> <i>11-09-2000</i>	27.08	72.92	16.38	0.62	0.00	0.00
<b>Start of Calendar Year</b> <i>01-04-2001</i>	37.71	62.29	16.43	0.36	0.00	0.00
<b>Start of Water Year</b> <i>09-28-2000</i>	17.42	82.58	62.01	39.43	16.70	0.00
<b>One Year Ago</b> <i>02-10-2000</i>	2.32	97.68	45.02	29.53	0.00	0.00



***Intensity:***

- None
- D0 Abnormally Dry
- D1 Moderate Drought
- D2 Severe Drought
- D3 Extreme Drought
- D4 Exceptional Drought

*The Drought Monitor focuses on broad-scale conditions. Local conditions may vary. For more information on the Drought Monitor, go to <https://droughtmonitor.unl.edu/About.aspx>*

***Author:***

Douglas Le Comte  
 CPC/NOAA



**droughtmonitor.unl.edu**