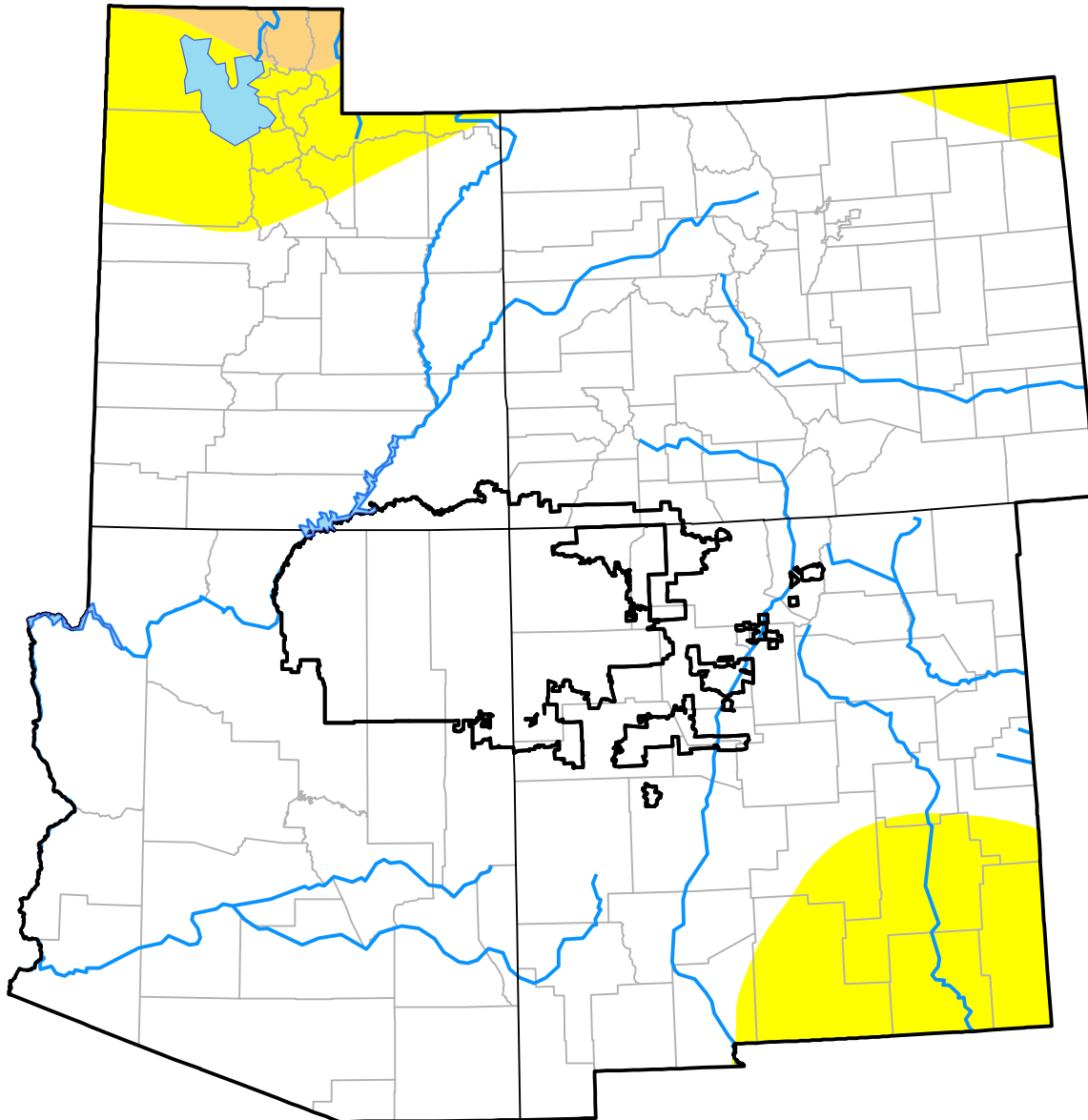








# Four Corners RDEWS and Surrounding Areas

(Released Thursday, Apr. 5, 2001)  
Valid 8 a.m. EDT



***Intensity:***

-  None
-  D0 Abnormally Dry
-  D1 Moderate Drought
-  D2 Severe Drought
-  D3 Extreme Drought
-  D4 Exceptional Drought

*The Drought Monitor focuses on broad-scale conditions. Local conditions may vary. For more information on the Drought Monitor, go to <https://droughtmonitor.unl.edu/About.aspx>*

***Author:***

David Miskus  
NOAA/NWS/NCEP/CPC

