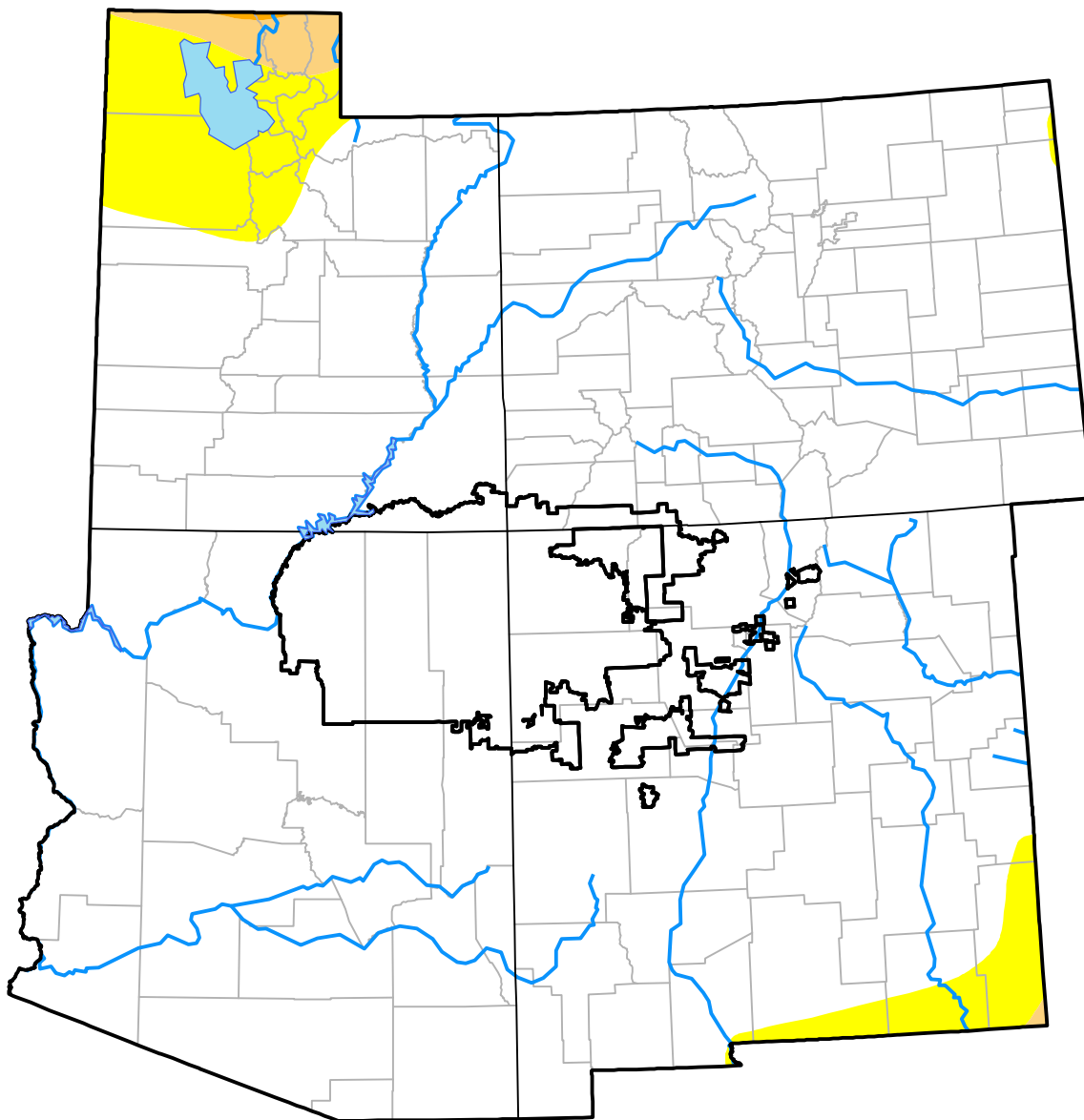


U.S. Drought Monitor

Four Corners RDEWS

May 29, 2001
 (Released Thursday, May. 31, 2001)
 Valid 8 a.m. EDT



Drought Conditions (Percent Area)

	None	D0	D1	D2	D3	D4
Current	100.00	0.00	0.00	0.00	0.00	0.00
Last Week <i>05-24-2001</i>	100.00	0.00	0.00	0.00	0.00	0.00
3 Months Ago <i>03-01-2001</i>	100.00	0.00	0.00	0.00	0.00	0.00
Start of Calendar Year <i>01-04-2001</i>	99.75	0.25	0.00	0.00	0.00	0.00
Start of Water Year <i>09-28-2000</i>	0.05	55.27	35.68	9.00	0.00	0.00
One Year Ago <i>06-01-2000</i>	10.90	55.42	31.70	1.98	0.00	0.00

Intensity:

- None
- D0 Abnormally Dry
- D1 Moderate Drought
- D2 Severe Drought
- D3 Extreme Drought
- D4 Exceptional Drought

The Drought Monitor focuses on broad-scale conditions. Local conditions may vary. For more information on the Drought Monitor, go to <https://droughtmonitor.unl.edu/About.aspx>

Author:

Karin Gleason
 National Centers for Environmental Information

