

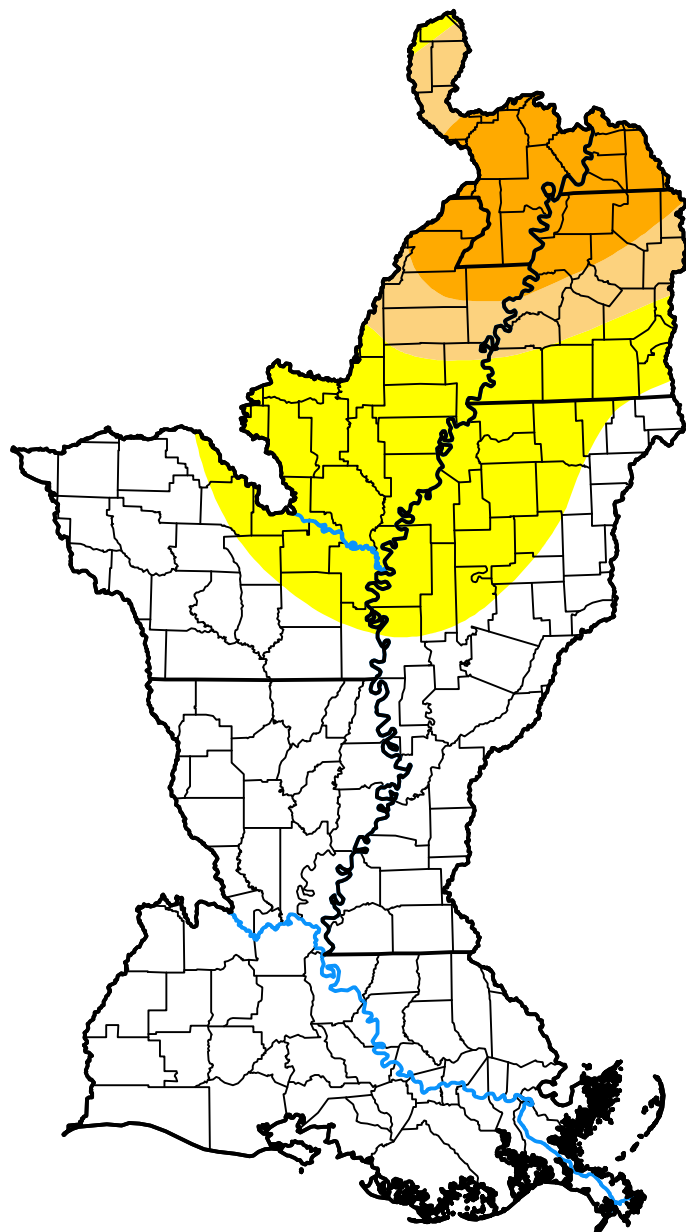
U.S. Drought Monitor

Lower Mississippi Watershed

July 3, 2001

(Released Thursday, Jul. 5, 2001)

Valid 8 a.m. EDT



Drought Conditions (Percent Area)

	None	D0-D4	D1-D4	D2-D4	D3-D4	D4
Current	62.80	37.20	14.94	8.85	0.00	0.00
Last Week <i>06-28-2001</i>	62.80	37.20	14.94	8.85	0.00	0.00
3 Months Ago <i>04-05-2001</i>	85.98	14.02	0.00	0.00	0.00	0.00
Start of Calendar Year <i>01-04-2001</i>	51.29	48.71	25.64	10.44	0.00	0.00
Start of Water Year <i>09-28-2000</i>	0.10	99.90	97.61	90.67	66.24	0.18
One Year Ago <i>07-06-2000</i>	68.62	31.38	24.22	18.05	10.42	0.00

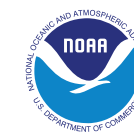
Intensity:

- None
- D0 Abnormally Dry
- D1 Moderate Drought
- D2 Severe Drought
- D3 Extreme Drought
- D4 Exceptional Drought

The Drought Monitor focuses on broad-scale conditions. Local conditions may vary. For more information on the Drought Monitor, go to <https://droughtmonitor.unl.edu/About.aspx>

Author:

Mark Svoboda
National Drought Mitigation Center



droughtmonitor.unl.edu