

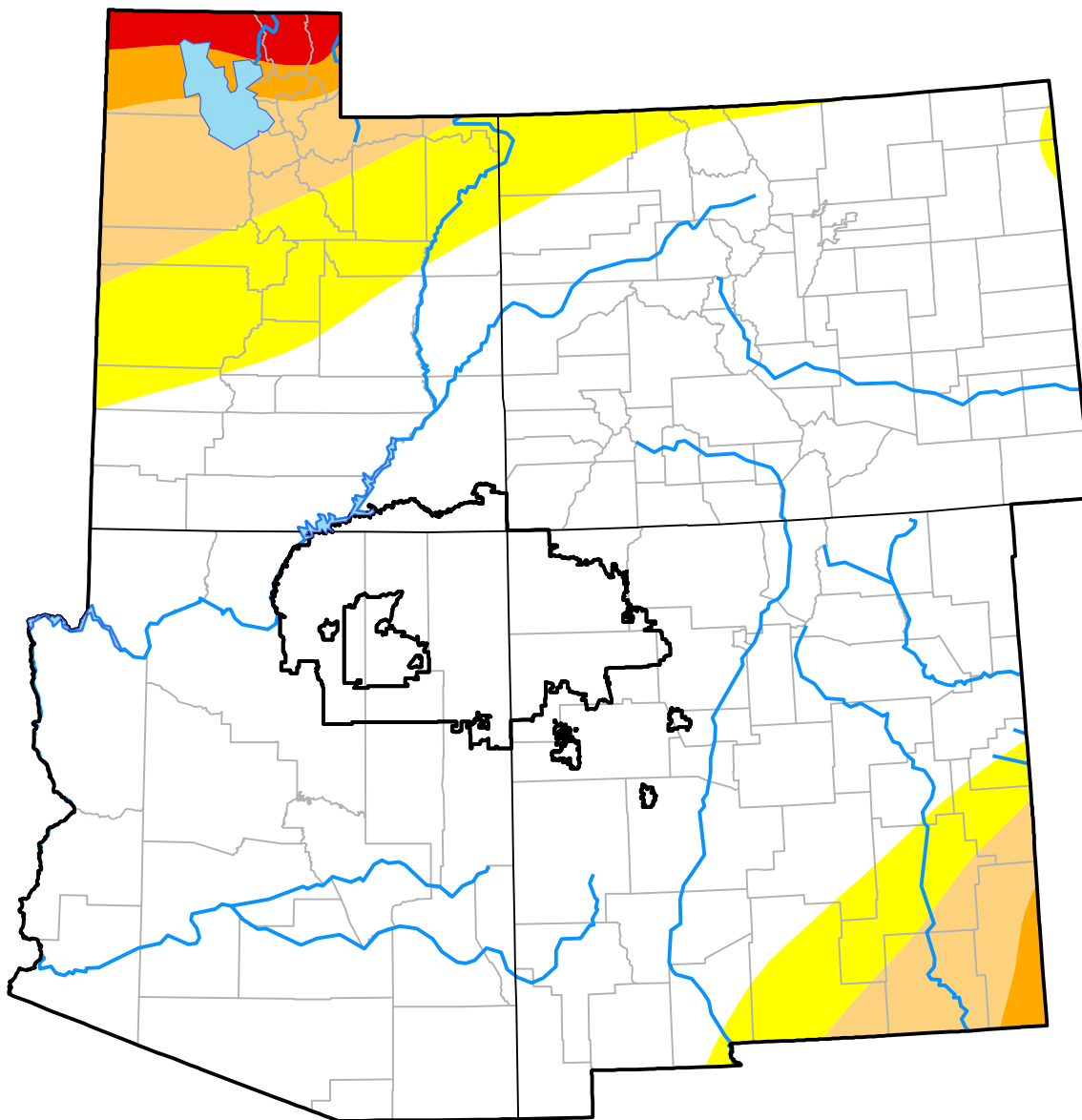
U.S. Drought Monitor Navajo RDEWS

August 21, 2001
(Released Thursday, Aug. 23, 2001)

Valid 8 a.m. EDT

Drought Conditions (Percent Area)

	None	D0-D4	D1-D4	D2-D4	D3-D4	D4
Current	100.00	0.00	0.00	0.00	0.00	0.00
Last Week <i>08-16-2001</i>	100.00	0.00	0.00	0.00	0.00	0.00
3 Months Ago <i>05-24-2001</i>	100.00	0.00	0.00	0.00	0.00	0.00
Start of Calendar Year <i>01-04-2001</i>	100.00	0.00	0.00	0.00	0.00	0.00
Start of Water Year <i>09-28-2000</i>	0.03	99.97	50.21	12.01	0.00	0.00
One Year Ago <i>08-24-2000</i>	0.35	99.65	38.88	16.50	0.00	0.00



Intensity:

- None
- D0 Abnormally Dry
- D1 Moderate Drought
- D2 Severe Drought
- D3 Extreme Drought
- D4 Exceptional Drought

The Drought Monitor focuses on broad-scale conditions. Local conditions may vary. For more information on the Drought Monitor, go to <https://droughtmonitor.unl.edu/About.aspx>

Author:

David Miskus
NOAA/NWS/NCEP/CPC

