

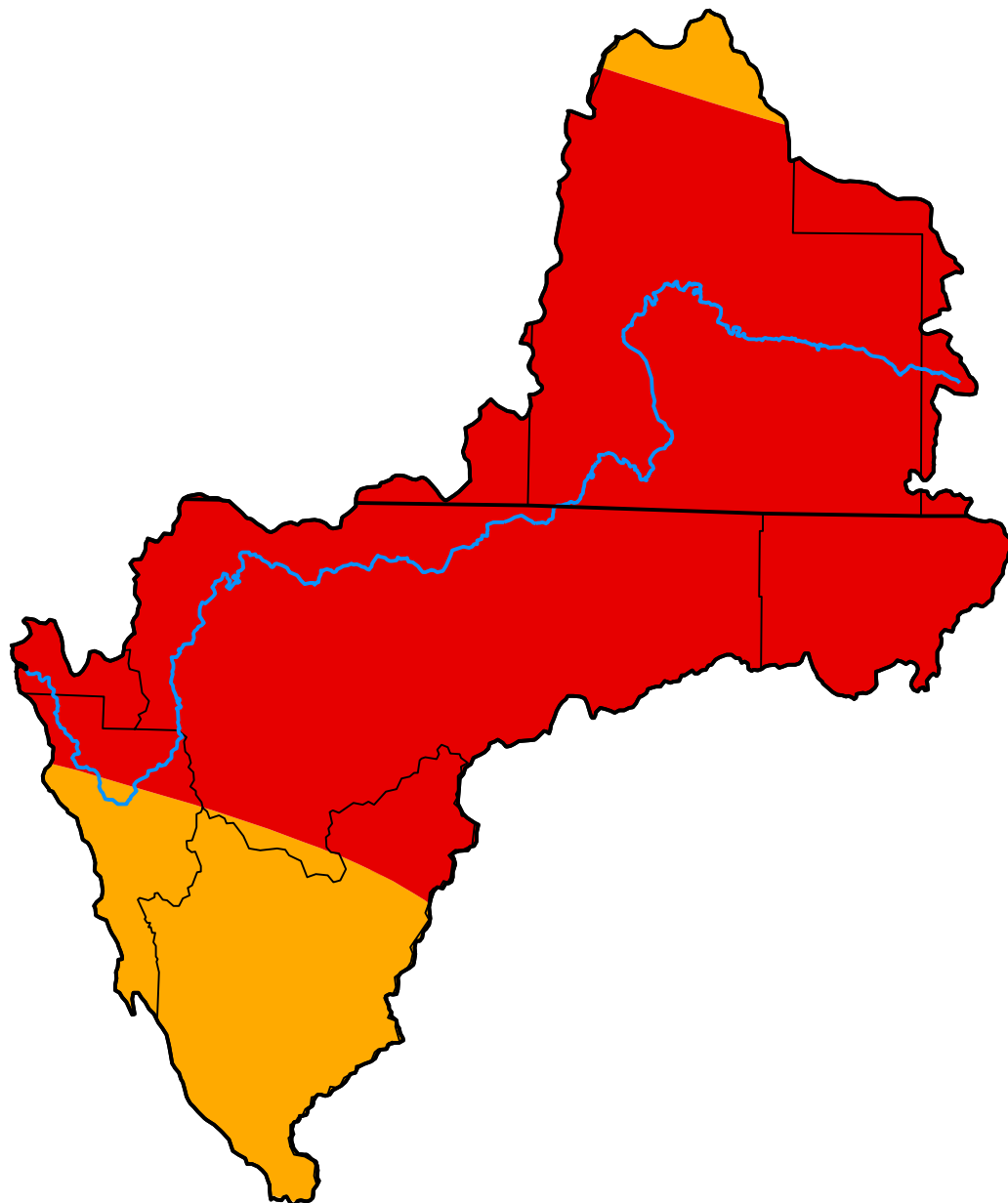
U.S. Drought Monitor Klamath River Basin

September 4, 2001
(Released Thursday, Sep. 6, 2001)

Valid 8 a.m. EDT

Drought Conditions (Percent Area)

	None	D0-D4	D1-D4	D2-D4	D3-D4	D4
Current	0.00	100.00	100.00	99.99	80.21	0.00
Last Week <i>08-28-2001</i>	0.00	100.00	100.00	99.99	80.21	0.00
3 Months Ago <i>06-05-2001</i>	0.00	100.00	99.85	67.15	29.39	0.00
Start of Calendar Year <i>01-02-2001</i>	100.00	0.00	0.00	0.00	0.00	0.00
Start of Water Year <i>09-26-2000</i>	100.00	0.00	0.00	0.00	0.00	0.00
One Year Ago <i>09-05-2000</i>	100.00	0.00	0.00	0.00	0.00	0.00



Intensity:



The Drought Monitor focuses on broad-scale conditions. Local conditions may vary. For more information on the Drought Monitor, go to <https://droughtmonitor.unl.edu/About.aspx>

Author:

Richard Tinker
CPC/NOAA/NWS/NCEP



droughtmonitor.unl.edu