

U.S. Drought Monitor

Arkansas-White-Red Watershed

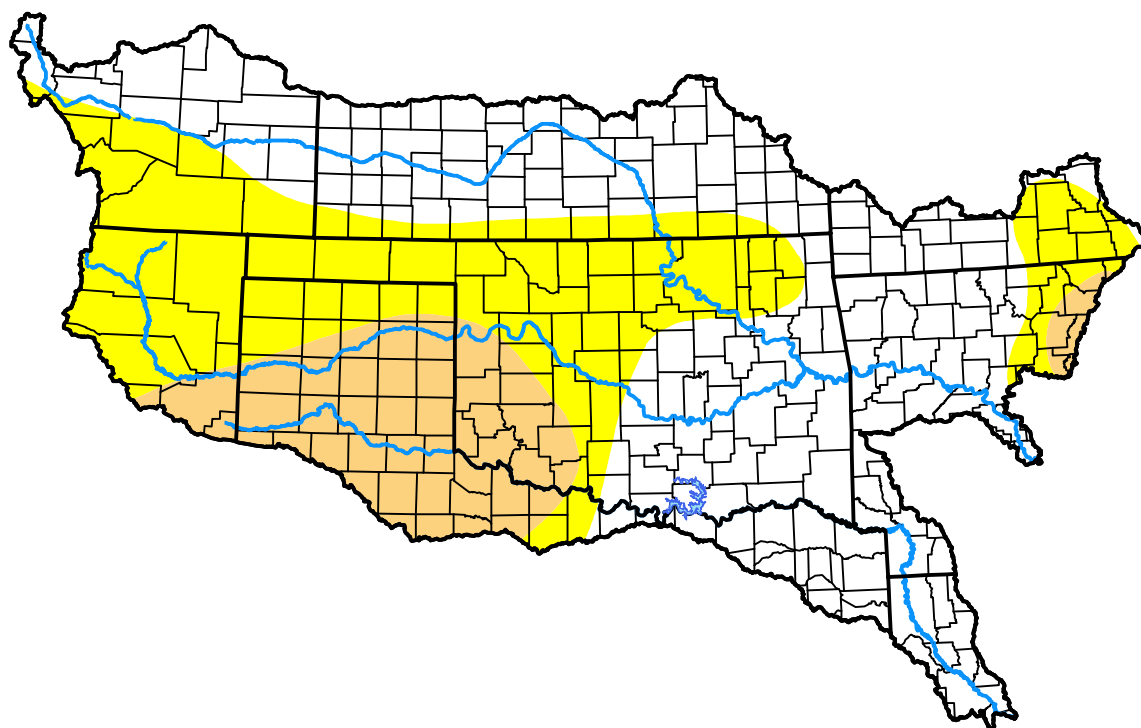
October 23, 2001

(Released Thursday, Oct. 25, 2001)

Valid 8 a.m. EDT

Drought Conditions (Percent Area)

	None	D0	D1	D2	D3	D4
Current	51.36	32.98	15.66	0.00	0.00	0.00
Last Week <i>10-18-2001</i>	57.09	36.73	6.18	0.00	0.00	0.00
3 Months Ago <i>07-26-2001</i>	25.89	50.90	16.02	7.20	0.00	0.00
Start of Calendar Year <i>01-04-2001</i>	93.95	5.94	0.11	0.00	0.00	0.00
Start of Water Year <i>09-27-2001</i>	56.27	36.00	7.62	0.12	0.00	0.00
One Year Ago <i>10-26-2000</i>	0.61	34.13	52.41	9.98	2.88	0.00



Intensity:



The Drought Monitor focuses on broad-scale conditions. Local conditions may vary. For more information on the Drought Monitor, go to <https://droughtmonitor.unl.edu/About.aspx>

Author:

Mark Svoboda
National Drought Mitigation Center



droughtmonitor.unl.edu