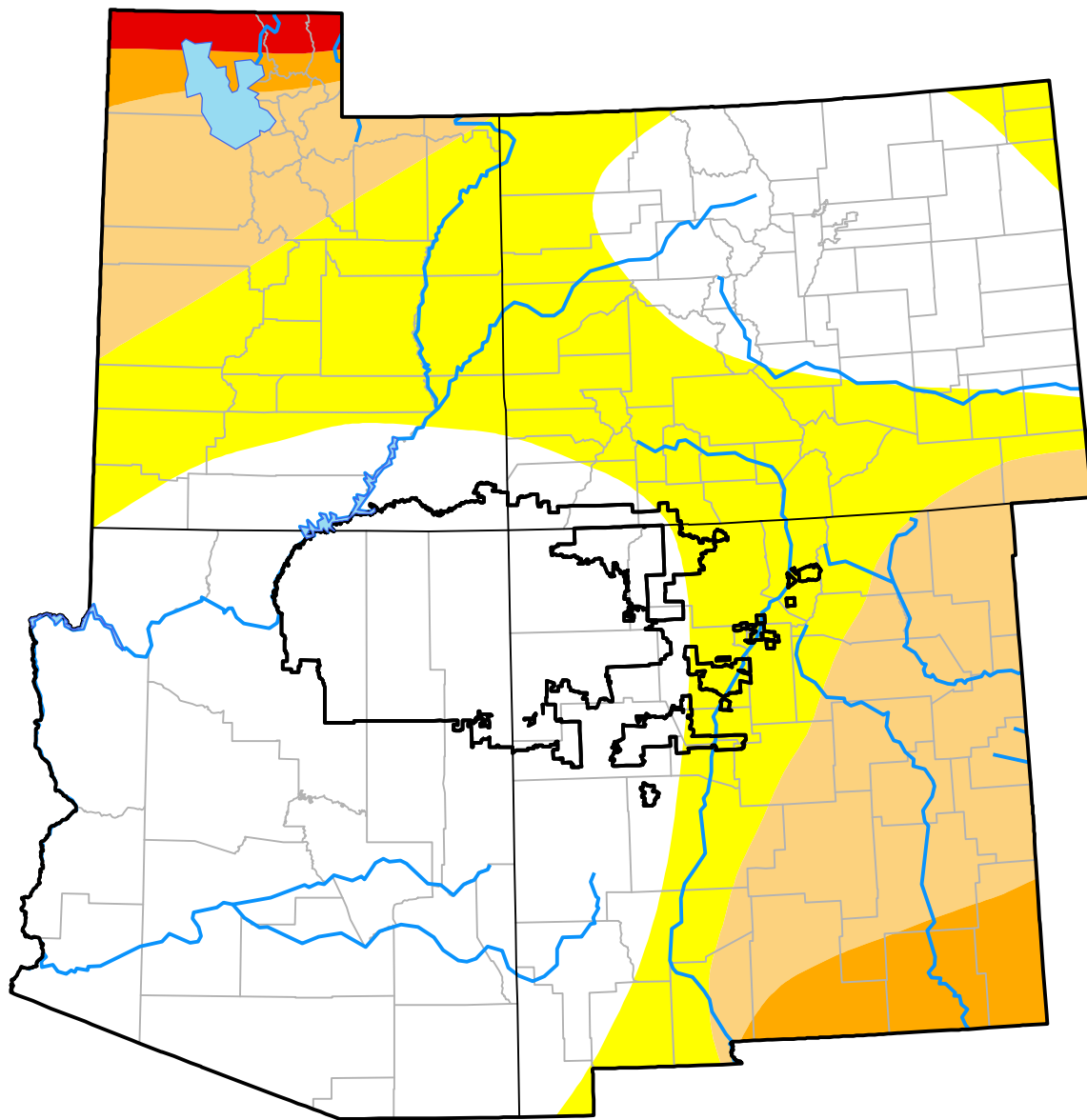


U.S. Drought Monitor

Four Corners RDEWS

October 30, 2001
 (Released Thursday, Nov. 1, 2001)
 Valid 7 a.m. EST



Drought Conditions (Percent Area)

	None	D0	D1	D2	D3	D4
Current	93.81	6.19	0.00	0.00	0.00	0.00
Last Week <i>10-25-2001</i>	99.32	0.68	0.00	0.00	0.00	0.00
3 Months Ago <i>08-02-2001</i>	100.00	0.00	0.00	0.00	0.00	0.00
Start of Calendar Year <i>01-04-2001</i>	99.75	0.25	0.00	0.00	0.00	0.00
Start of Water Year <i>09-27-2001</i>	99.32	0.68	0.00	0.00	0.00	0.00
One Year Ago <i>11-02-2000</i>	34.65	64.66	0.69	0.00	0.00	0.00

Intensity:

- None
- D0 Abnormally Dry
- D1 Moderate Drought
- D2 Severe Drought
- D3 Extreme Drought
- D4 Exceptional Drought

The Drought Monitor focuses on broad-scale conditions. Local conditions may vary. For more information on the Drought Monitor, go to <https://droughtmonitor.unl.edu/About.aspx>

Author:

Mark Svoboda
 National Drought Mitigation Center

