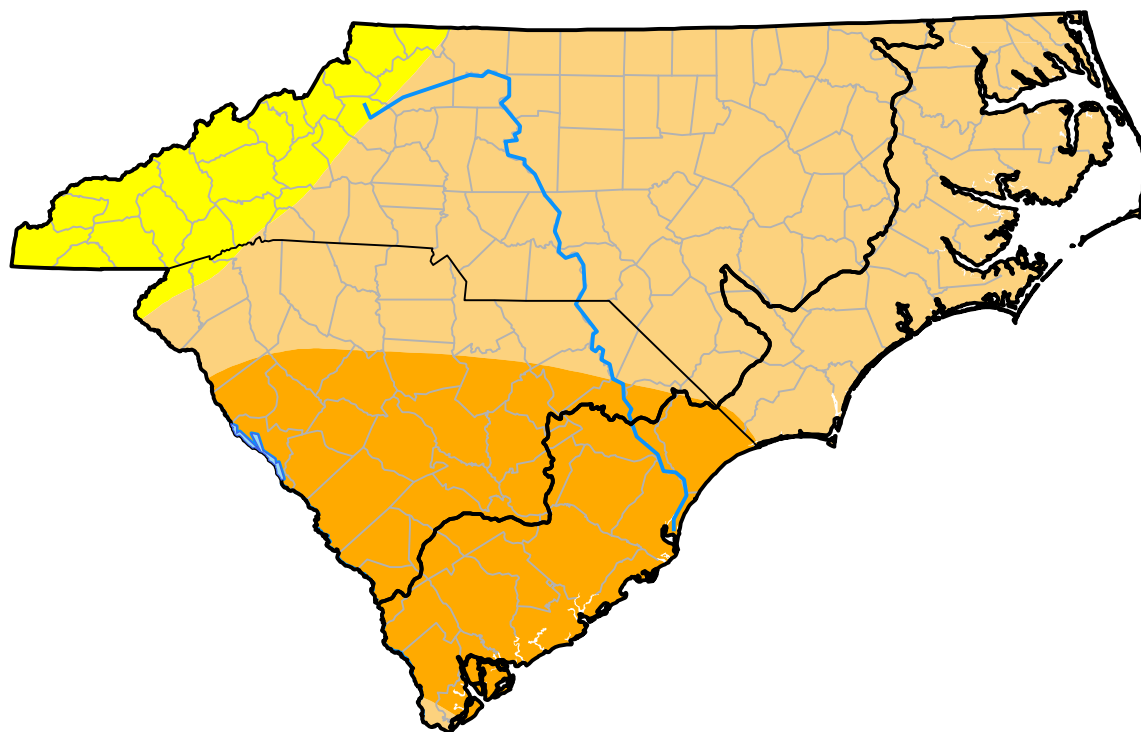


U.S. Drought Monitor

Coastal Carolinas RDEWS

October 30, 2001
 (Released Thursday, Nov. 1, 2001)
 Valid 7 a.m. EST



Drought Conditions (Percent Area)

	None	D0	D1	D2	D3	D4
Current	0.00	0.00	58.37	41.63	0.00	0.00
Last Week <i>10-25-2001</i>	0.00	59.08	35.54	5.38	0.00	0.00
3 Months Ago <i>08-02-2001</i>	66.50	23.30	10.21	0.00	0.00	0.00
Start of Calendar Year <i>01-04-2001</i>	97.18	2.82	0.00	0.00	0.00	0.00
Start of Water Year <i>09-27-2001</i>	86.90	13.10	0.00	0.00	0.00	0.00
One Year Ago <i>11-02-2000</i>	50.54	20.86	19.50	9.10	0.00	0.00

Intensity:



The Drought Monitor focuses on broad-scale conditions. Local conditions may vary. For more information on the Drought Monitor, go to <https://droughtmonitor.unl.edu/About.aspx>

Author:

Mark Svoboda
 National Drought Mitigation Center



droughtmonitor.unl.edu