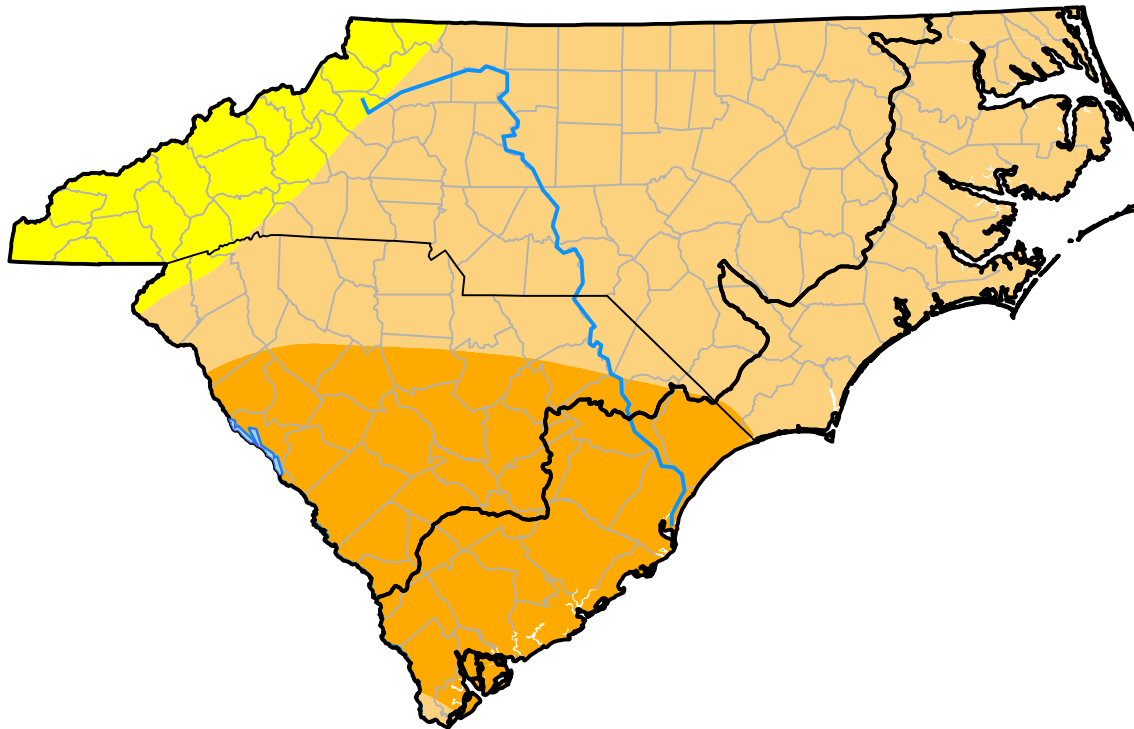


# Carolinas RDEWS and Surrounding Areas

Drought Conditions (Percent Area)

	None	D0	D1	D2	D3	D4
<b>Current</b>	0.00	10.36	62.38	27.27	0.00	0.00
<b>Last Week</b> <i>10-25-2001</i>	0.00	50.70	39.74	9.57	0.00	0.00
<b>3 Months Ago</b> <i>08-02-2001</i>	46.62	34.87	16.08	2.44	0.00	0.00
<b>Start of Calendar Year</b> <i>01-04-2001</i>	41.22	18.31	16.39	22.33	1.76	0.00
<b>Start of Water Year</b> <i>09-27-2001</i>	54.56	39.16	6.28	0.00	0.00	0.00
<b>One Year Ago</b> <i>11-02-2000</i>	15.93	17.16	16.45	16.20	34.27	0.00



Intensity:

- None
- D0 Abnormally Dry
- D1 Moderate Drought
- D2 Severe Drought
- D3 Extreme Drought
- D4 Exceptional Drought

The Drought Monitor focuses on broad-scale conditions. Local conditions may vary. For more information on the Drought Monitor, go to <https://droughtmonitor.unl.edu/About.aspx>

Author:

Mark Svoboda  
National Drought Mitigation Center

