

U.S. Drought Monitor

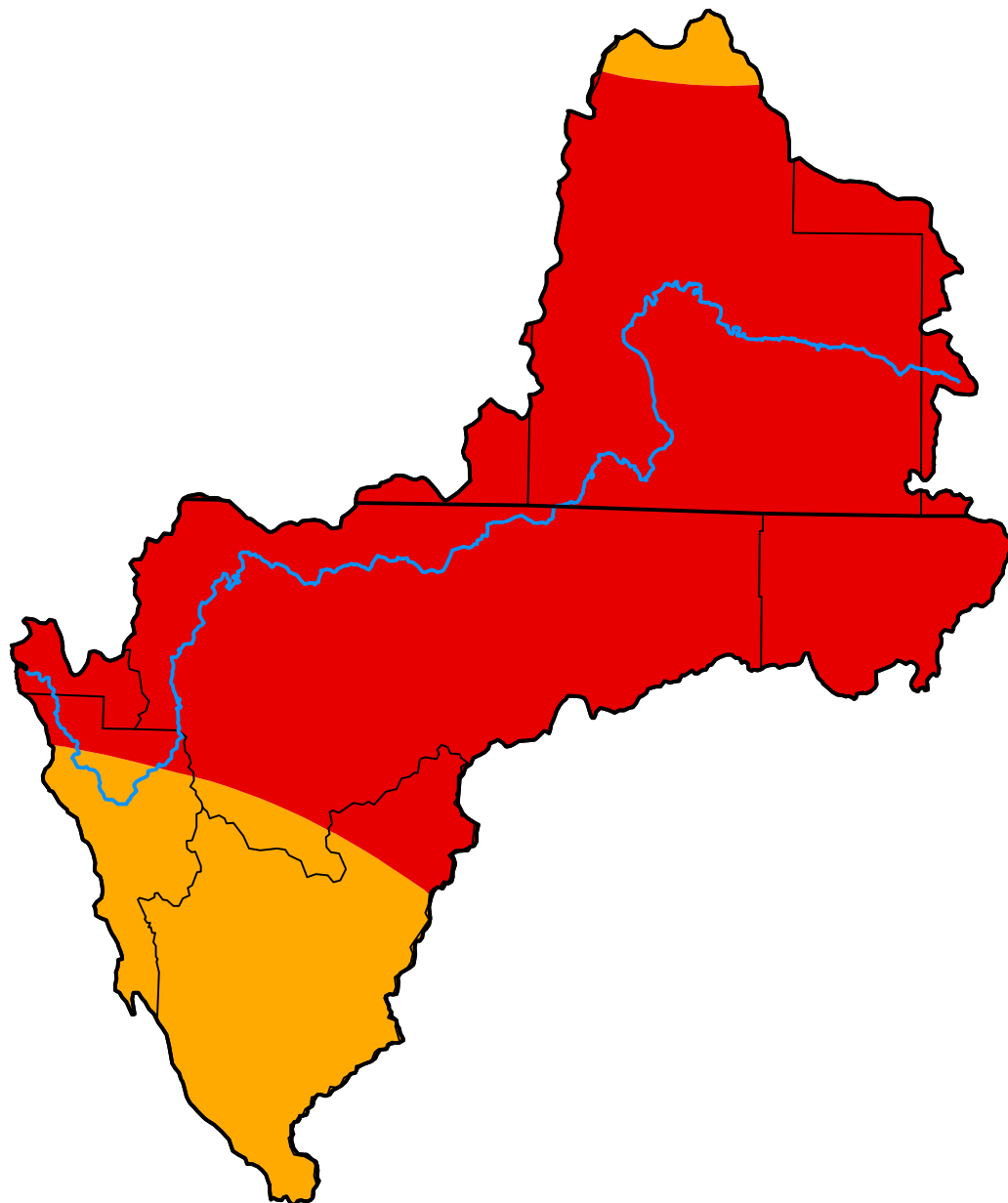
Klamath River Basin

November 13, 2001
 (Released Thursday, Nov. 15, 2001)

Valid 7 a.m. EST

Drought Conditions (Percent Area)

	None	D0	D1	D2	D3	D4
Current	0.00	0.00	0.00	21.18	78.82	0.00
Last Week <i>11-06-2001</i>	0.00	0.00	0.00	21.18	78.82	0.00
3 Months Ago <i>08-14-2001</i>	0.00	0.00	5.57	34.23	60.20	0.00
Start of Calendar Year <i>01-02-2001</i>	100.00	0.00	0.00	0.00	0.00	0.00
Start of Water Year <i>09-25-2001</i>	0.00	0.00	0.00	17.79	82.21	0.00
One Year Ago <i>11-14-2000</i>	100.00	0.00	0.00	0.00	0.00	0.00



Intensity:

- None
- D0 Abnormally Dry
- D1 Moderate Drought
- D2 Severe Drought
- D3 Extreme Drought
- D4 Exceptional Drought

The Drought Monitor focuses on broad-scale conditions. Local conditions may vary. For more information on the Drought Monitor, go to <https://droughtmonitor.unl.edu/About.aspx>

Author:

Michael Hayes
 National Drought Mitigation Center



droughtmonitor.unl.edu