

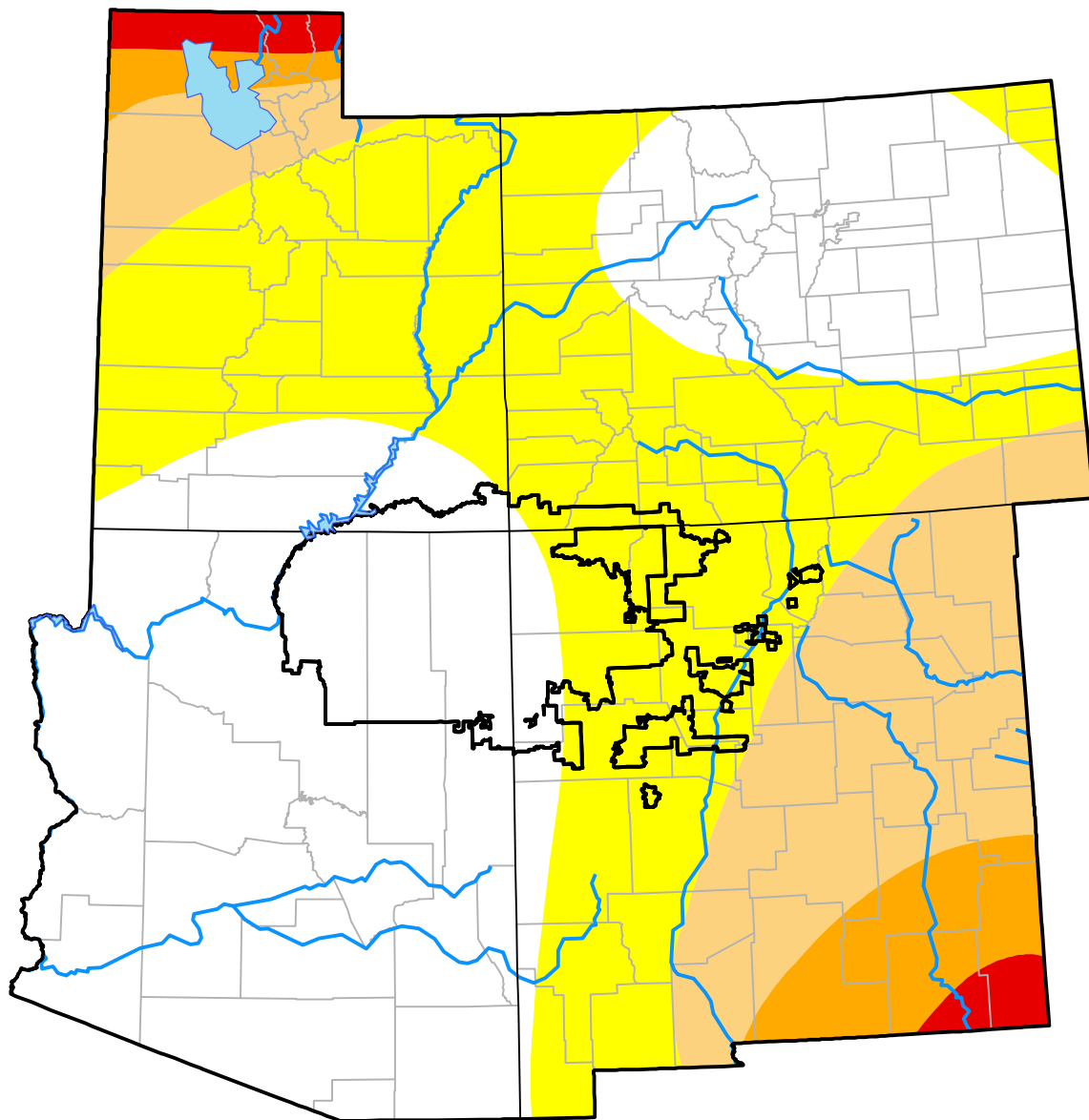
Corners RDEWS and Surrounding Areas

(Released Thursday, Nov. 29, 2001)

Valid 7 a.m. EST

Drought Conditions (Percent Area)

	None	D0-D4	D1-D4	D2-D4	D3-D4	D4
Current	44.28	55.72	21.27	6.24	1.65	0.00
Last Week <i>11-21-2001</i>	43.89	56.11	23.99	6.24	1.65	0.00
3 Months Ago <i>08-30-2001</i>	79.17	20.83	8.29	2.95	1.09	0.00
Start of Calendar Year <i>01-04-2001</i>	88.15	11.85	1.76	0.00	0.00	0.00
Start of Water Year <i>09-27-2001</i>	60.78	39.22	15.34	4.33	1.09	0.00
One Year Ago <i>11-30-2000</i>	78.54	21.46	1.80	0.00	0.00	0.00



Intensity:

- None
- D0 Abnormally Dry
- D1 Moderate Drought
- D2 Severe Drought
- D3 Extreme Drought
- D4 Exceptional Drought

The Drought Monitor focuses on broad-scale conditions. Local conditions may vary. For more information on the Drought Monitor, go to <https://droughtmonitor.unl.edu/About.aspx>

Author:

Brad Rippey
U.S. Department of Agriculture

