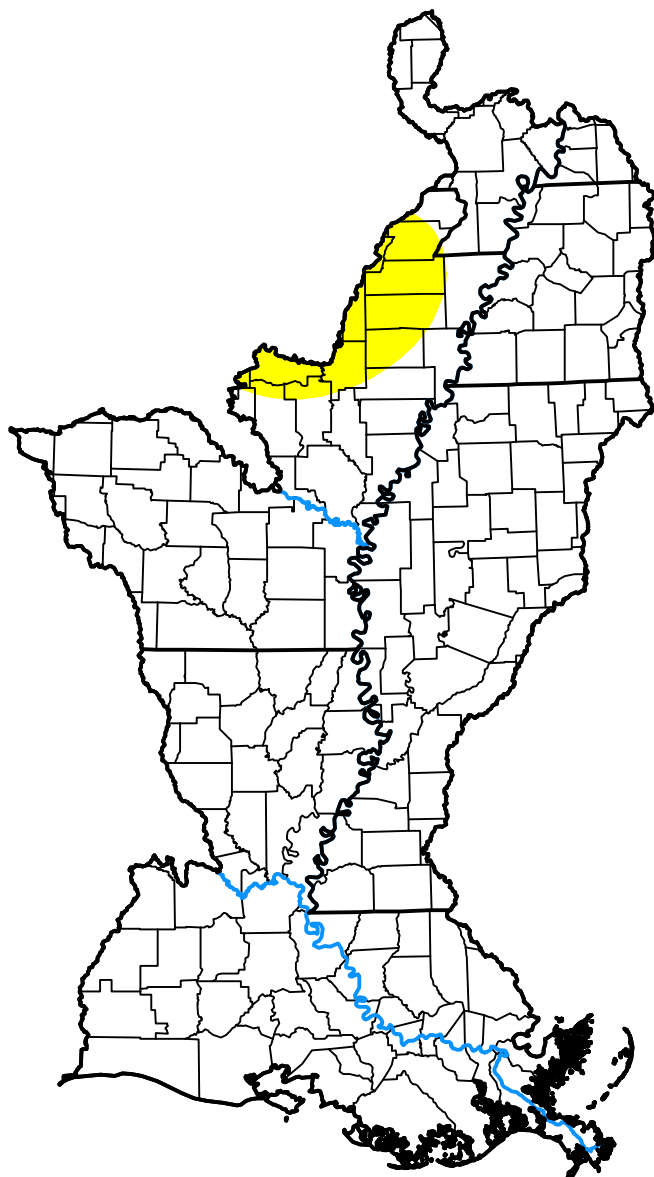


U.S. Drought Monitor

Lower Mississippi Watershed

December 4, 2001
(Released Thursday, Dec. 6, 2001)
Valid 7 a.m. EST



Intensity:



The Drought Monitor focuses on broad-scale conditions. Local conditions may vary. For more information on the Drought Monitor, go to <https://droughtmonitor.unl.edu/About.aspx>

Author:

Richard Tinker
CPC/NOAA/NWS/NCEP



droughtmonitor.unl.edu