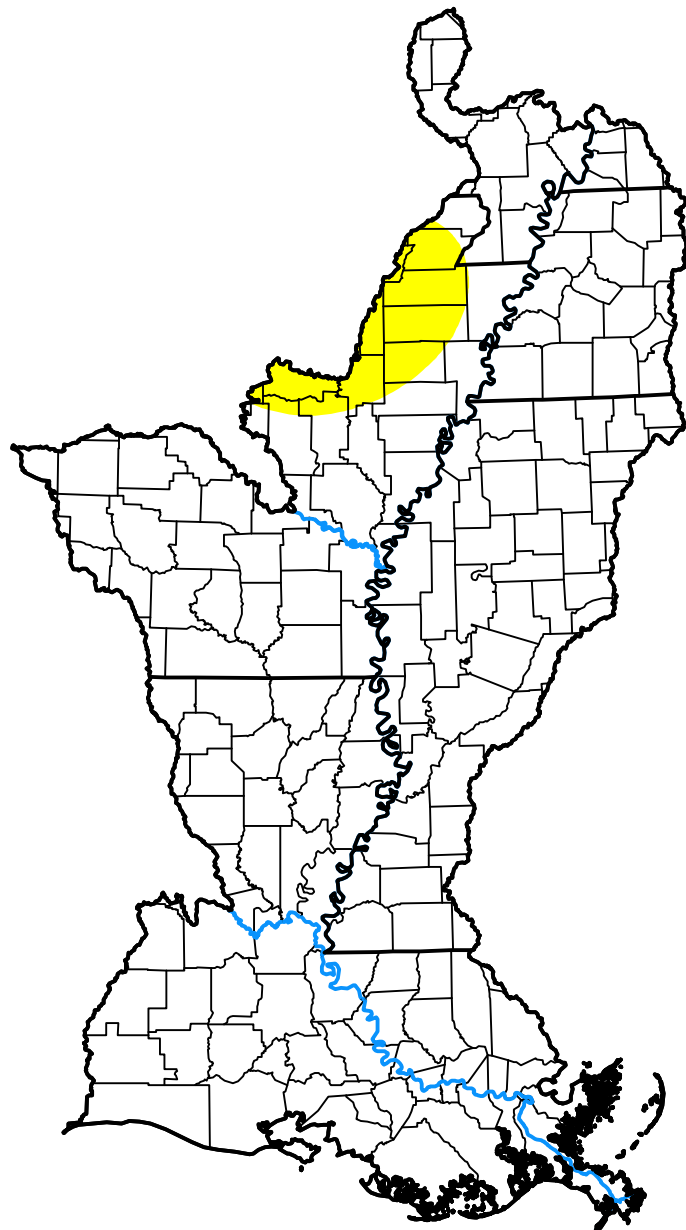


U.S. Drought Monitor

Lower Mississippi Watershed

December 4, 2001
 (Released Thursday, Dec. 6, 2001)
 Valid 7 a.m. EST



Drought Conditions (Percent Area)

	None	D0-D4	D1-D4	D2-D4	D3-D4	D4
Current	95.81	4.19	0.00	0.00	0.00	0.00
Last Week <i>11-29-2001</i>	91.35	8.65	2.77	0.00	0.00	0.00
3 Months Ago <i>09-06-2001</i>	75.24	24.76	8.66	3.62	0.00	0.00
Start of Calendar Year <i>01-04-2001</i>	51.29	48.71	25.64	10.44	0.00	0.00
Start of Water Year <i>09-27-2001</i>	79.41	20.59	8.66	3.62	0.00	0.00
One Year Ago <i>12-07-2000</i>	35.13	64.87	36.79	19.07	0.00	0.00

Intensity:



The Drought Monitor focuses on broad-scale conditions. Local conditions may vary. For more information on the Drought Monitor, go to <https://droughtmonitor.unl.edu/About.aspx>

Author:

Richard Tinker
 CPC/NOAA/NWS/NCEP

