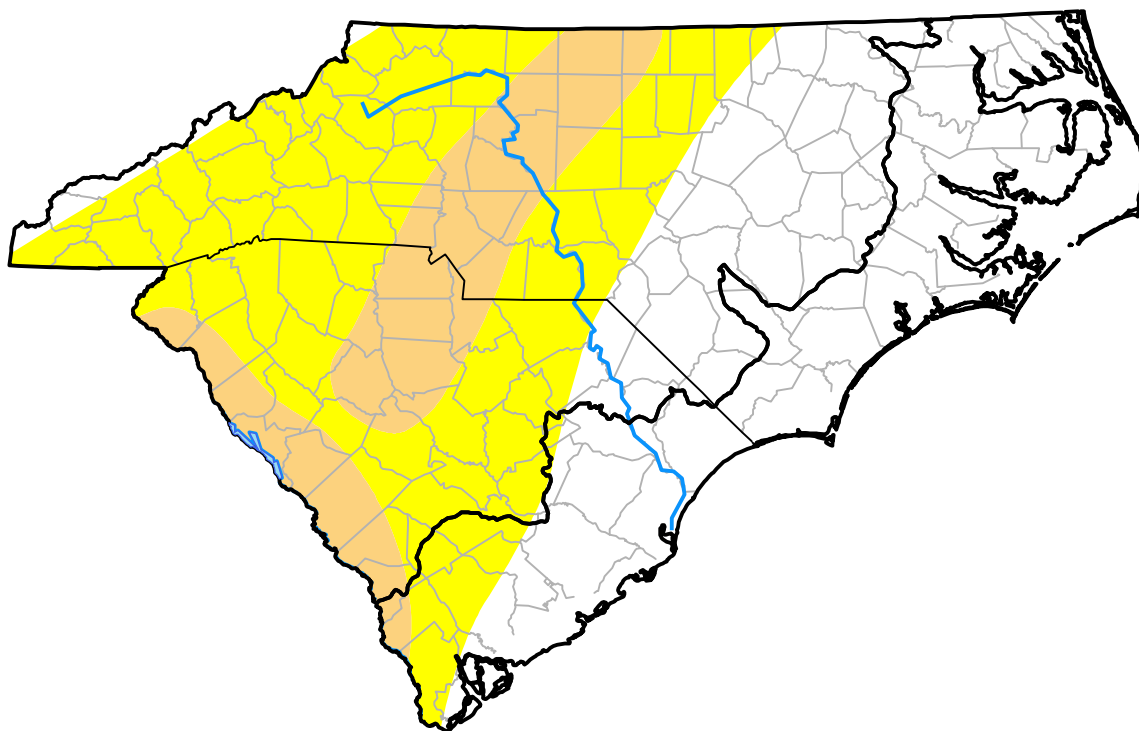


Carolinas RDEWS and Surrounding Areas

Drought Conditions (Percent Area)

	None	D0	D1	D2	D3	D4
Current	43.55	39.66	16.79	0.00	0.00	0.00
Last Week <i>11-21-2002</i>	44.27	39.06	16.66	0.00	0.00	0.00
3 Months Ago <i>08-29-2002</i>	0.00	6.62	9.24	23.25	30.52	30.37
Start of Calendar Year <i>01-03-2002</i>	0.00	0.07	7.34	65.53	27.06	0.00
Start of Water Year <i>10-03-2002</i>	9.12	14.70	14.62	34.34	18.67	8.55
One Year Ago <i>11-29-2001</i>	0.00	0.00	0.00	100.00	0.00	0.00



Intensity:

- None
- D0 Abnormally Dry
- D1 Moderate Drought
- D2 Severe Drought
- D3 Extreme Drought
- D4 Exceptional Drought

The Drought Monitor focuses on broad-scale conditions. Local conditions may vary. For more information on the Drought Monitor, go to <https://droughtmonitor.unl.edu/About.aspx>

Author:

Scott Stephens
NOAA/NESDIS/NCEI

