

U.S. Drought Monitor

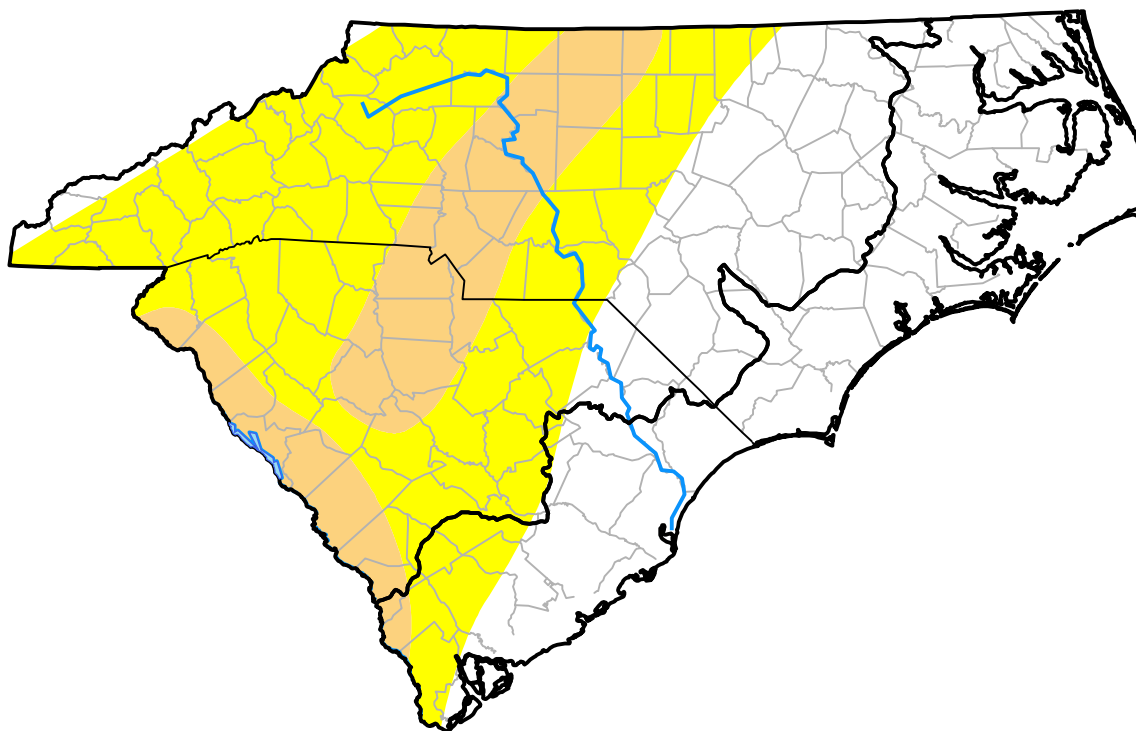
Coastal Carolinas RDEWS

November 26, 2002
 (Released Wednesday, Nov. 27, 2002)

Valid 7 a.m. EST

Drought Conditions (Percent Area)

	None	D0-D4	D1-D4	D2-D4	D3-D4	D4
Current	90.65	9.35	0.14	0.00	0.00	0.00
Last Week <i>11-21-2002</i>	91.68	8.32	0.00	0.00	0.00	0.00
3 Months Ago <i>08-29-2002</i>	0.00	100.00	71.68	54.39	21.13	0.00
Start of Calendar Year <i>01-03-2002</i>	0.00	100.00	100.00	100.00	40.27	0.00
Start of Water Year <i>10-03-2002</i>	40.81	59.19	27.44	10.81	0.00	0.00
One Year Ago <i>11-29-2001</i>	0.00	100.00	100.00	100.00	0.00	0.00



Intensity:



The Drought Monitor focuses on broad-scale conditions. Local conditions may vary. For more information on the Drought Monitor, go to <https://droughtmonitor.unl.edu/About.aspx>

Author:

Scott Stephens
 NOAA/NESDIS/NCEI



droughtmonitor.unl.edu