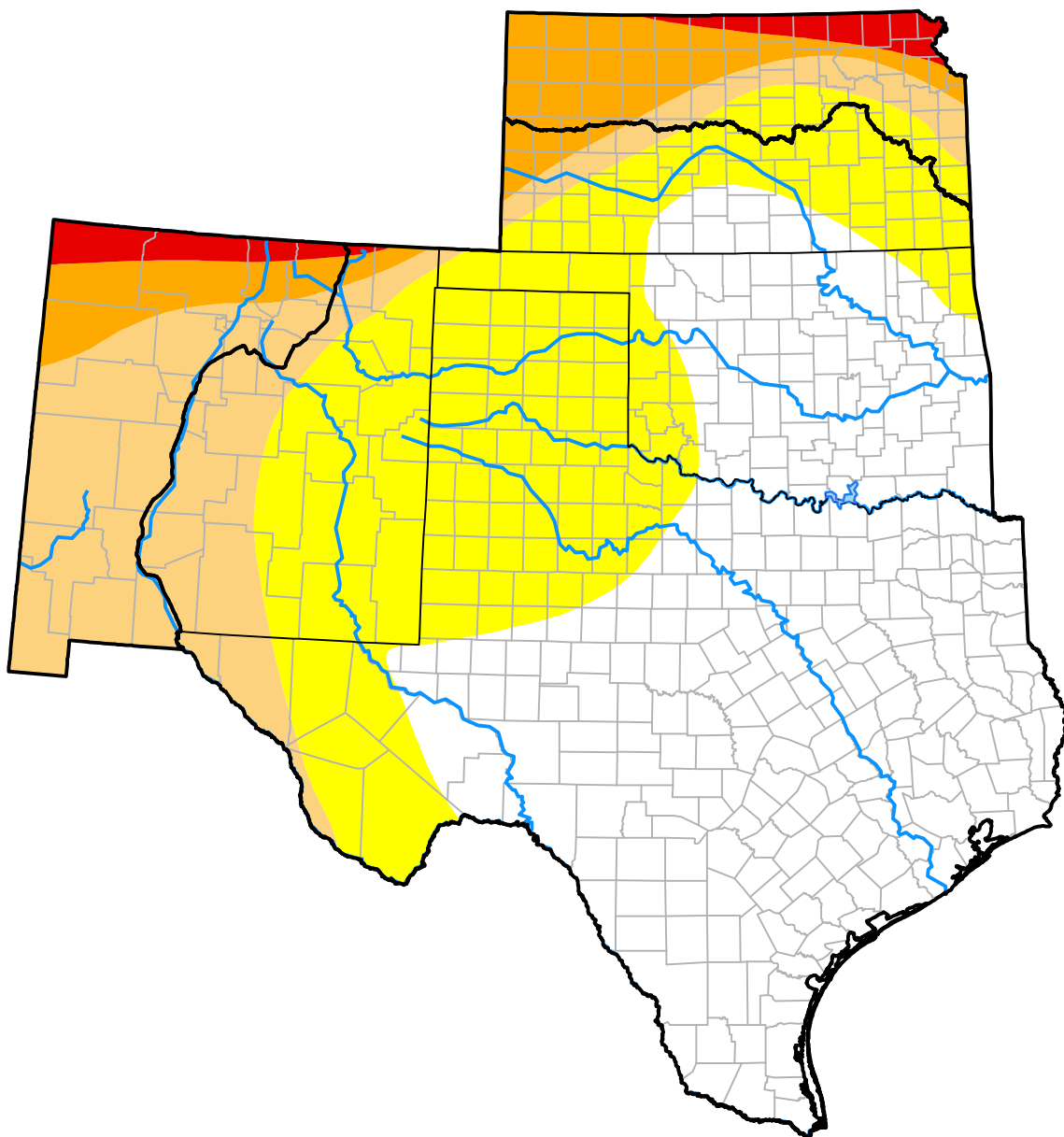


U.S. Drought Monitor

Southern Plains RDEWS

March 18, 2003
(Released Thursday, Mar. 20, 2003)
 Valid 7 a.m. EST



Drought Conditions (Percent Area)

	None	D0	D1	D2	D3	D4
Current	52.49	27.77	15.34	3.00	1.40	0.00
Last Week <i>03-13-2003</i>	52.31	27.54	15.71	3.11	1.33	0.00
3 Months Ago <i>12-19-2002</i>	65.27	9.25	19.54	5.12	0.82	0.00
Start of Calendar Year <i>01-02-2003</i>	66.97	9.57	19.38	3.26	0.82	0.00
Start of Water Year <i>10-03-2002</i>	26.44	32.07	30.68	7.66	3.00	0.14
One Year Ago <i>03-21-2002</i>	24.45	22.93	37.55	12.82	2.26	0.00

Intensity:



The Drought Monitor focuses on broad-scale conditions. Local conditions may vary. For more information on the Drought Monitor, go to <https://droughtmonitor.unl.edu/About.aspx>

Author:

Richard Heim
 NCEI/NOAA

