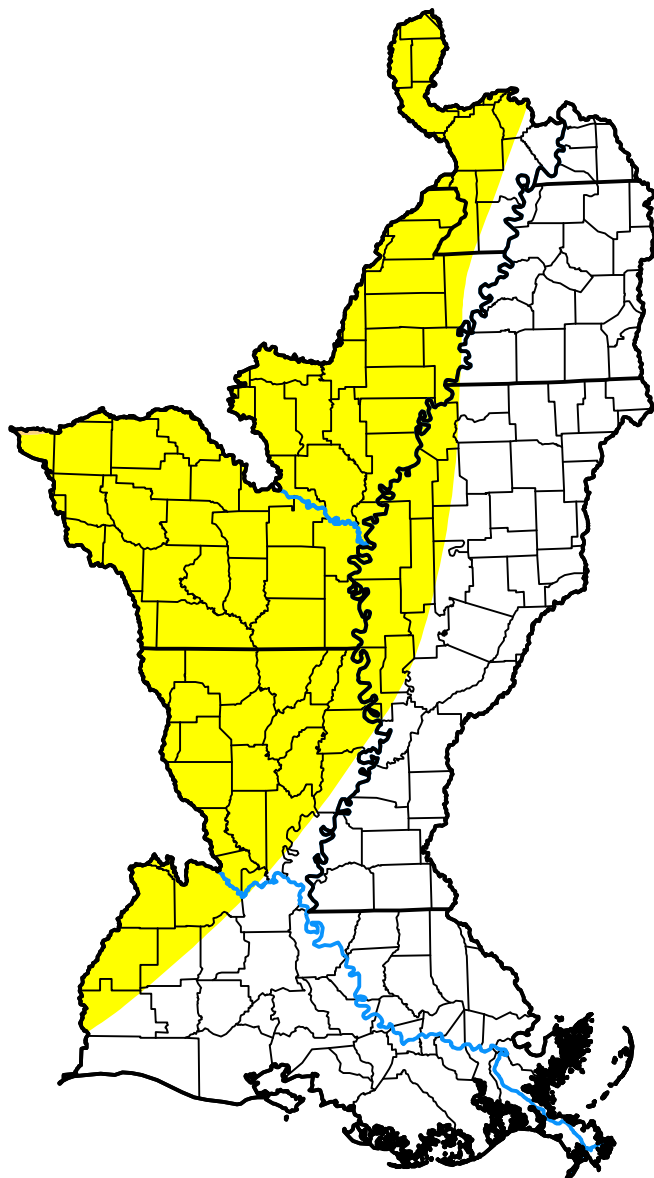


# U.S. Drought Monitor

## Lower Mississippi Watershed

**April 29, 2003**  
(Released Thursday, May. 1, 2003)  
Valid 8 a.m. EDT



### Intensity:



*The Drought Monitor focuses on broad-scale conditions. Local conditions may vary. For more information on the Drought Monitor, go to <https://droughtmonitor.unl.edu/About.aspx>*

### Author:

Michael Hayes  
National Drought Mitigation Center



**droughtmonitor.unl.edu**