

# U.S. Drought Monitor

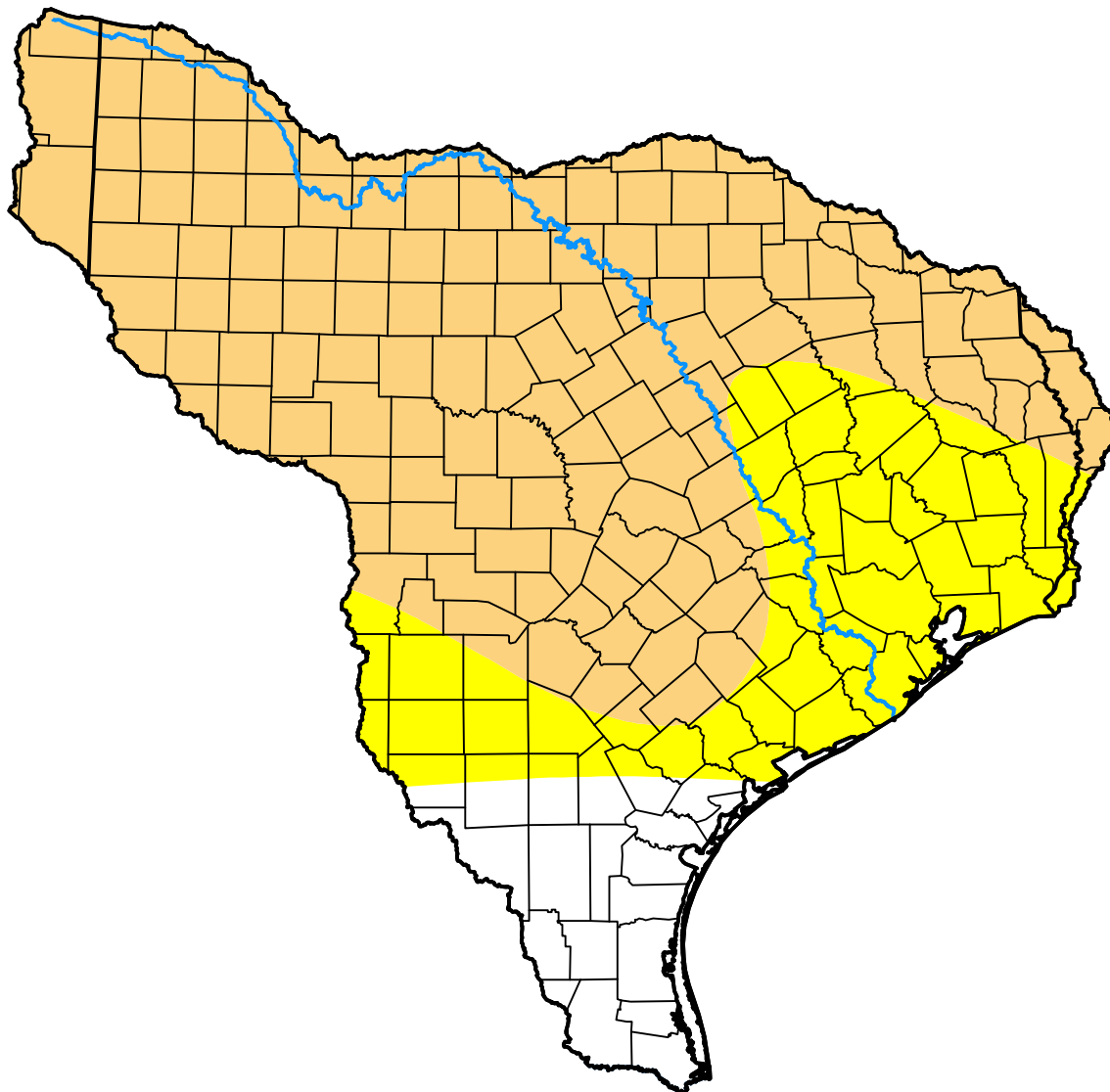
## Texas-Gulf Watershed

**May 13, 2003**  
 (Released Thursday, May. 15, 2003)

Valid 8 a.m. EDT

*Drought Conditions (Percent Area)*

	None	D0	D1	D2	D3	D4
<b>Current</b>	9.94	23.88	66.18	0.00	0.00	0.00
<b>Last Week</b> <i>05-08-2003</i>	11.00	71.64	17.36	0.00	0.00	0.00
<b>3 Months Ago</b> <i>02-13-2003</i>	98.86	1.14	0.00	0.00	0.00	0.00
<b>Start of Calendar Year</b> <i>01-02-2003</i>	100.00	0.00	0.00	0.00	0.00	0.00
<b>Start of Water Year</b> <i>10-03-2002</i>	60.56	27.47	11.97	0.00	0.00	0.00
<b>One Year Ago</b> <i>05-16-2002</i>	29.72	21.06	38.10	6.34	4.78	0.00



***Intensity:***

- None
- D0 Abnormally Dry
- D1 Moderate Drought
- D2 Severe Drought
- D3 Extreme Drought
- D4 Exceptional Drought

*The Drought Monitor focuses on broad-scale conditions. Local conditions may vary. For more information on the Drought Monitor, go to <https://droughtmonitor.unl.edu/About.aspx>*

***Author:***

Richard Tinker  
 CPC/NOAA/NWS/NCEP



**droughtmonitor.unl.edu**