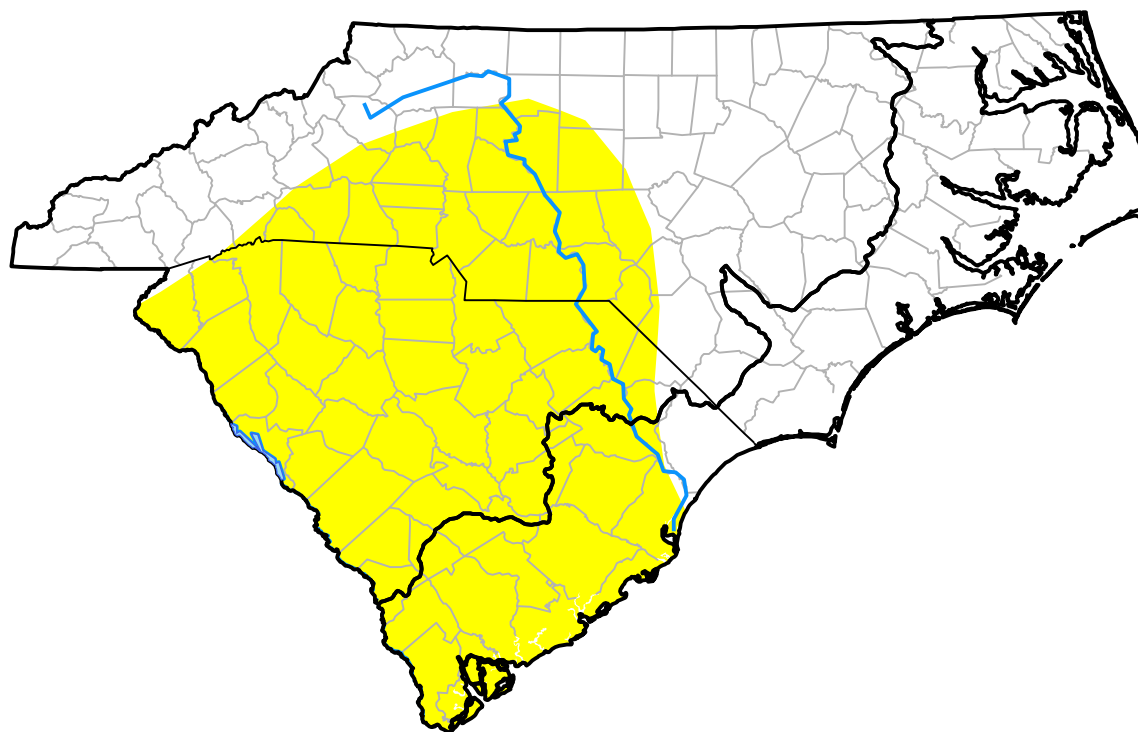


# U.S. Drought Monitor

## Coastal Carolinas RDEWS

**March 30, 2004**  
 (Released Thursday, Apr. 1, 2004)  
 Valid 7 a.m. EST



*Drought Conditions (Percent Area)*

	None	D0	D1	D2	D3	D4
<b>Current</b>	64.49	35.51	0.00	0.00	0.00	0.00
<b>Last Week</b> <i>03-25-2004</i>	68.55	31.45	0.00	0.00	0.00	0.00
<b>3 Months Ago</b> <i>12-31-2003</i>	100.00	0.00	0.00	0.00	0.00	0.00
<b>Start of Calendar Year</b> <i>12-31-2003</i>	100.00	0.00	0.00	0.00	0.00	0.00
<b>Start of Water Year</b> <i>10-02-2003</i>	100.00	0.00	0.00	0.00	0.00	0.00
<b>One Year Ago</b> <i>04-03-2003</i>	100.00	0.00	0.00	0.00	0.00	0.00

*Intensity:*



*The Drought Monitor focuses on broad-scale conditions. Local conditions may vary. For more information on the Drought Monitor, go to <https://droughtmonitor.unl.edu/About.aspx>*

*Author:*

Brad Rippey  
 U.S. Department of Agriculture



**droughtmonitor.unl.edu**