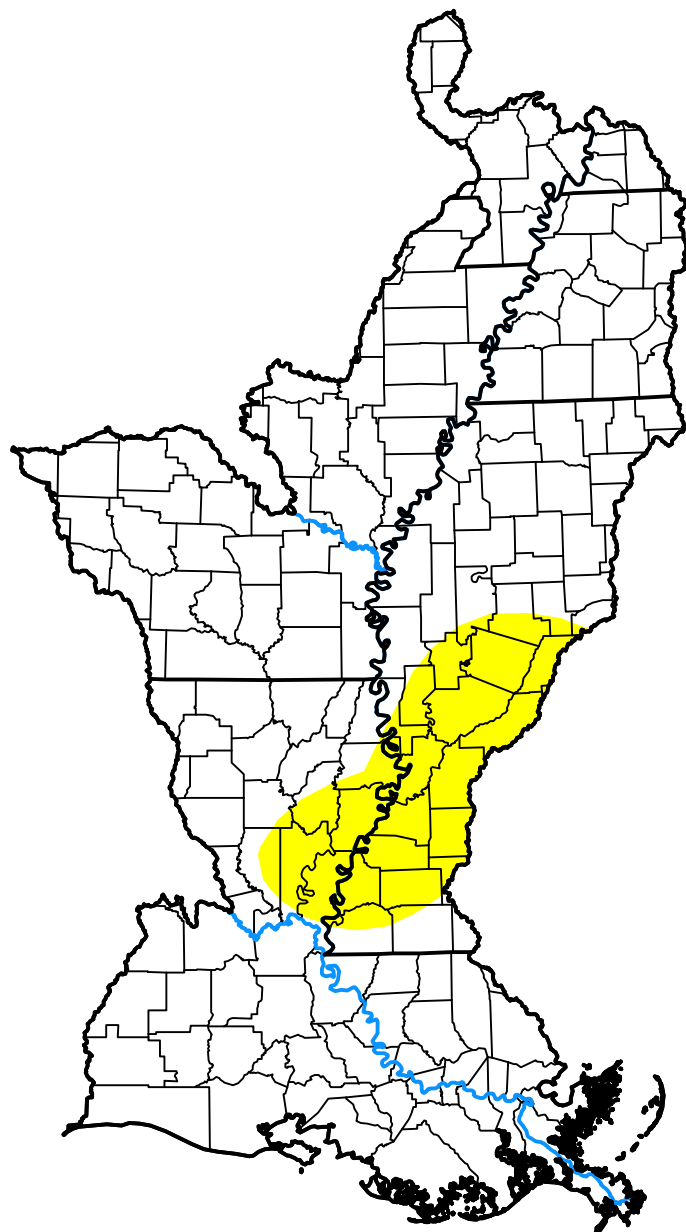


U.S. Drought Monitor

Lower Mississippi Watershed

May 11, 2004
 (Released Thursday, May. 13, 2004)
 Valid 8 a.m. EDT



Drought Conditions (Percent Area)

	None	D0	D1	D2	D3	D4
Current	88.24	11.76	0.00	0.00	0.00	0.00
Last Week <i>05-06-2004</i>	93.55	6.45	0.00	0.00	0.00	0.00
3 Months Ago <i>02-12-2004</i>	96.77	3.23	0.00	0.00	0.00	0.00
Start of Calendar Year <i>12-31-2003</i>	97.76	2.24	0.00	0.00	0.00	0.00
Start of Water Year <i>10-02-2003</i>	100.00	0.00	0.00	0.00	0.00	0.00
One Year Ago <i>05-15-2003</i>	55.02	35.44	9.55	0.00	0.00	0.00

Intensity:

- None
- D0 Abnormally Dry
- D1 Moderate Drought
- D2 Severe Drought
- D3 Extreme Drought
- D4 Exceptional Drought

The Drought Monitor focuses on broad-scale conditions. Local conditions may vary. For more information on the Drought Monitor, go to <https://droughtmonitor.unl.edu/About.aspx>

Author:

David Miskus
 NOAA/NWS/NCEP/CPC



droughtmonitor.unl.edu