

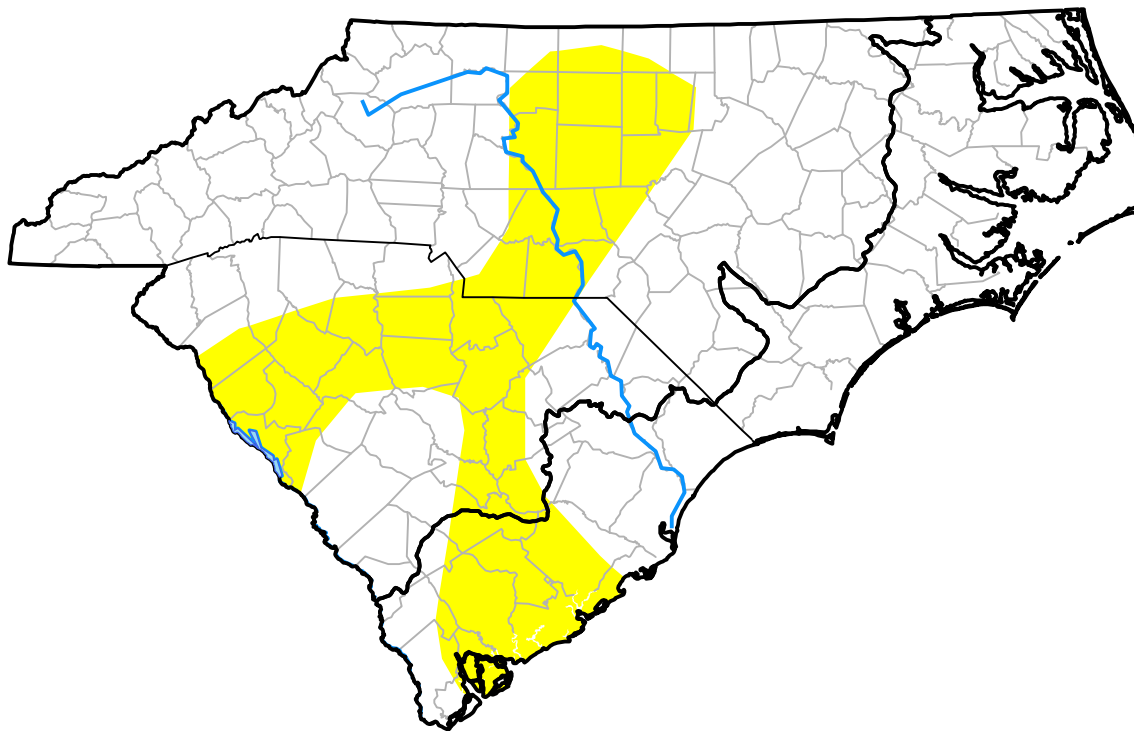
# Carolinas RDEWS and Surrounding Areas

(Released Thursday, Jul. 15, 2004)

10:00 a.m. EDT

Drought Conditions (Percent Area)

	None	D0	D1	D2	D3	D4
<b>Current</b>	74.57	25.43	0.00	0.00	0.00	0.00
<b>Last Week</b> <i>07-08-2004</i>	78.56	21.44	0.00	0.00	0.00	0.00
<b>3 Months Ago</b> <i>04-15-2004</i>	18.98	81.02	0.00	0.00	0.00	0.00
<b>Start of Calendar Year</b> <i>12-31-2003</i>	100.00	0.00	0.00	0.00	0.00	0.00
<b>Start of Water Year</b> <i>10-02-2003</i>	100.00	0.00	0.00	0.00	0.00	0.00
<b>One Year Ago</b> <i>07-17-2003</i>	100.00	0.00	0.00	0.00	0.00	0.00



Intensity:

- None
- D0 Abnormally Dry
- D1 Moderate Drought
- D2 Severe Drought
- D3 Extreme Drought
- D4 Exceptional Drought

The Drought Monitor focuses on broad-scale conditions. Local conditions may vary. For more information on the Drought Monitor, go to <https://droughtmonitor.unl.edu/About.aspx>

Author:

Mark Svoboda  
National Drought Mitigation Center

