

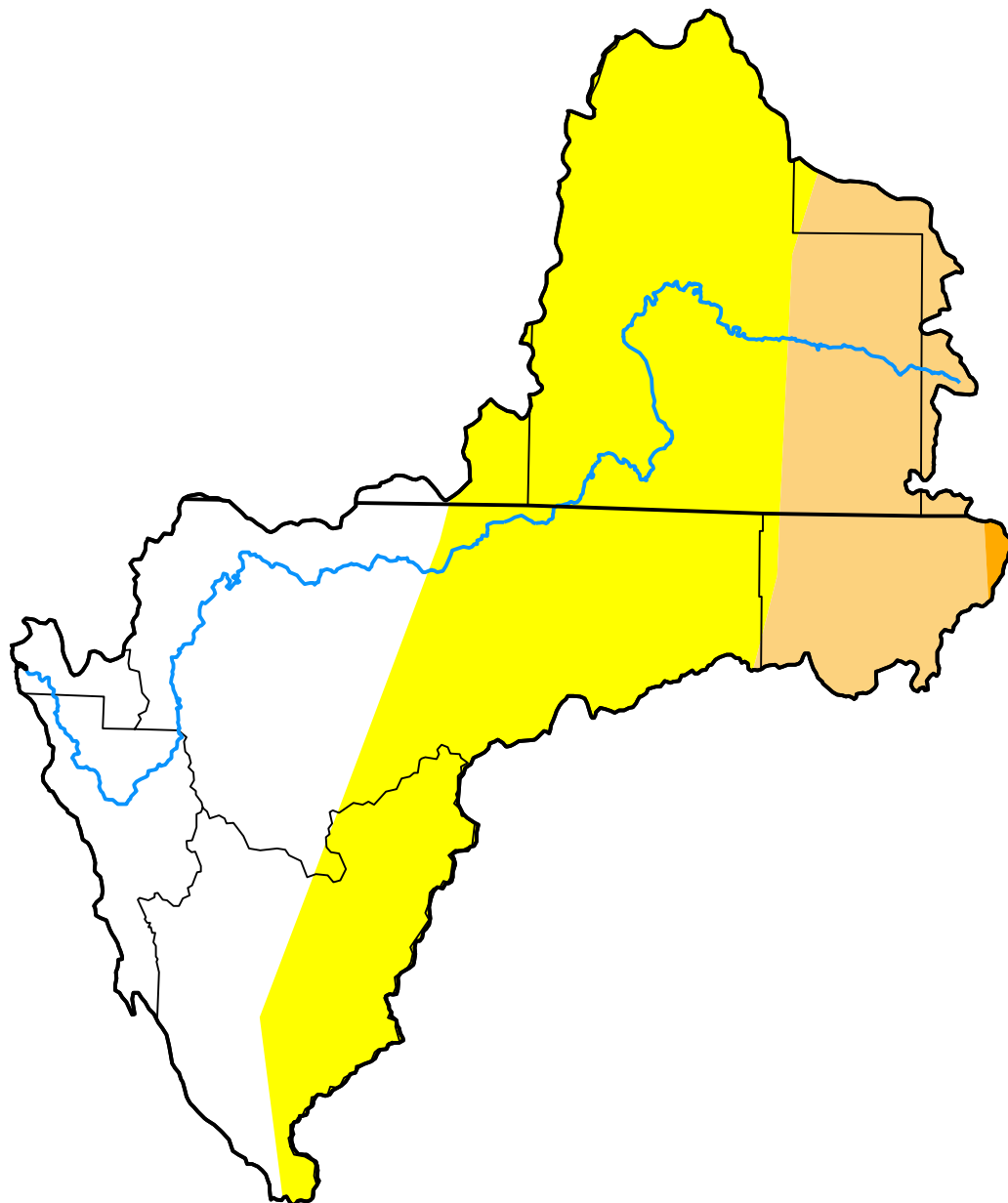
# U.S. Drought Monitor Klamath River Basin

**August 10, 2004**  
(Released Thursday, Aug. 12, 2004)

Valid 8 a.m. EDT

*Drought Conditions (Percent Area)*

	None	D0	D1	D2	D3	D4
<b>Current</b>	31.39	50.70	17.64	0.28	0.00	0.00
<b>Last Week</b> <i>08-03-2004</i>	76.35	22.88	0.77	0.00	0.00	0.00
<b>3 Months Ago</b> <i>05-11-2004</i>	84.91	15.09	0.00	0.00	0.00	0.00
<b>Start of Calendar Year</b> <i>12-30-2003</i>	59.13	19.27	17.72	3.88	0.00	0.00
<b>Start of Water Year</b> <i>09-30-2003</i>	68.75	12.93	17.55	0.77	0.00	0.00
<b>One Year Ago</b> <i>08-12-2003</i>	52.84	20.77	23.49	2.89	0.00	0.00



***Intensity:***



*The Drought Monitor focuses on broad-scale conditions. Local conditions may vary. For more information on the Drought Monitor, go to <https://droughtmonitor.unl.edu/About.aspx>*

***Author:***

Richard Tinker  
CPC/NOAA/NWS/NCEP



**droughtmonitor.unl.edu**