

U.S. Drought Monitor

Wind River and Surrounding Area

February 8, 2005

(Released Thursday, Feb. 10, 2005)

Valid 7 a.m. EST

Drought Conditions (Percent Area)

| | None | D0-D4 | D1-D4 | D2-D4 | D3-D4 | D4 |
|--|------|-------|-------|-------|-------|------|
| Current | 0.00 | 0.00 | 0.00 | 0.00 | 0.00 | 0.00 |
| Last Week <i>02-03-2005</i> | 0.00 | 0.00 | 0.00 | 0.00 | 0.00 | 0.00 |
| 3 Months Ago <i>11-11-2004</i> | 0.00 | 0.00 | 0.00 | 0.00 | 0.00 | 0.00 |
| Start of Calendar Year <i>01-06-2005</i> | 0.00 | 0.00 | 0.00 | 0.00 | 0.00 | 0.00 |
| Start of Water Year <i>09-30-2004</i> | 0.00 | 0.00 | 0.00 | 0.00 | 0.00 | 0.00 |
| One Year Ago <i>02-12-2004</i> | 0.00 | 0.00 | 0.00 | 0.00 | 0.00 | 0.00 |

Note: Statistics are for the surrounding area including the reservation.

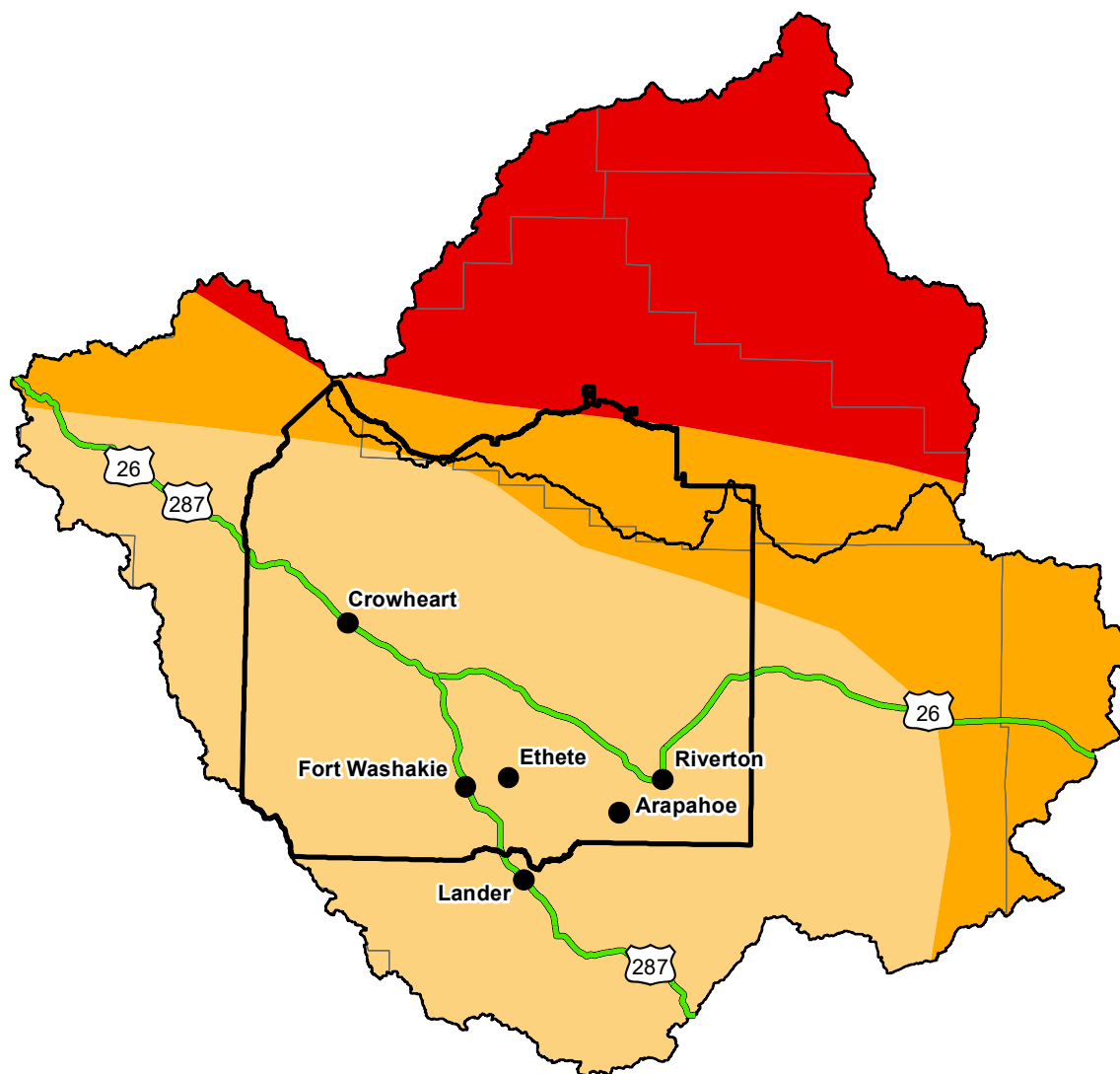
Intensity:

| | |
|---|--|
|  None |  D2 Severe Drought |
|  D0 Abnormally Dry |  D3 Extreme Drought |
|  D1 Moderate Drought |  D4 Exceptional Drought |

The Drought Monitor focuses on broad-scale conditions. Local conditions may vary. For more information on the Drought Monitor, go to <https://droughtmonitor.unl.edu/About.aspx>

Author:

Richard Tinker
CPC/NOAA/NWS/NCEP



<http://droughtmonitor.unl.edu/>