

# U.S. Drought Monitor

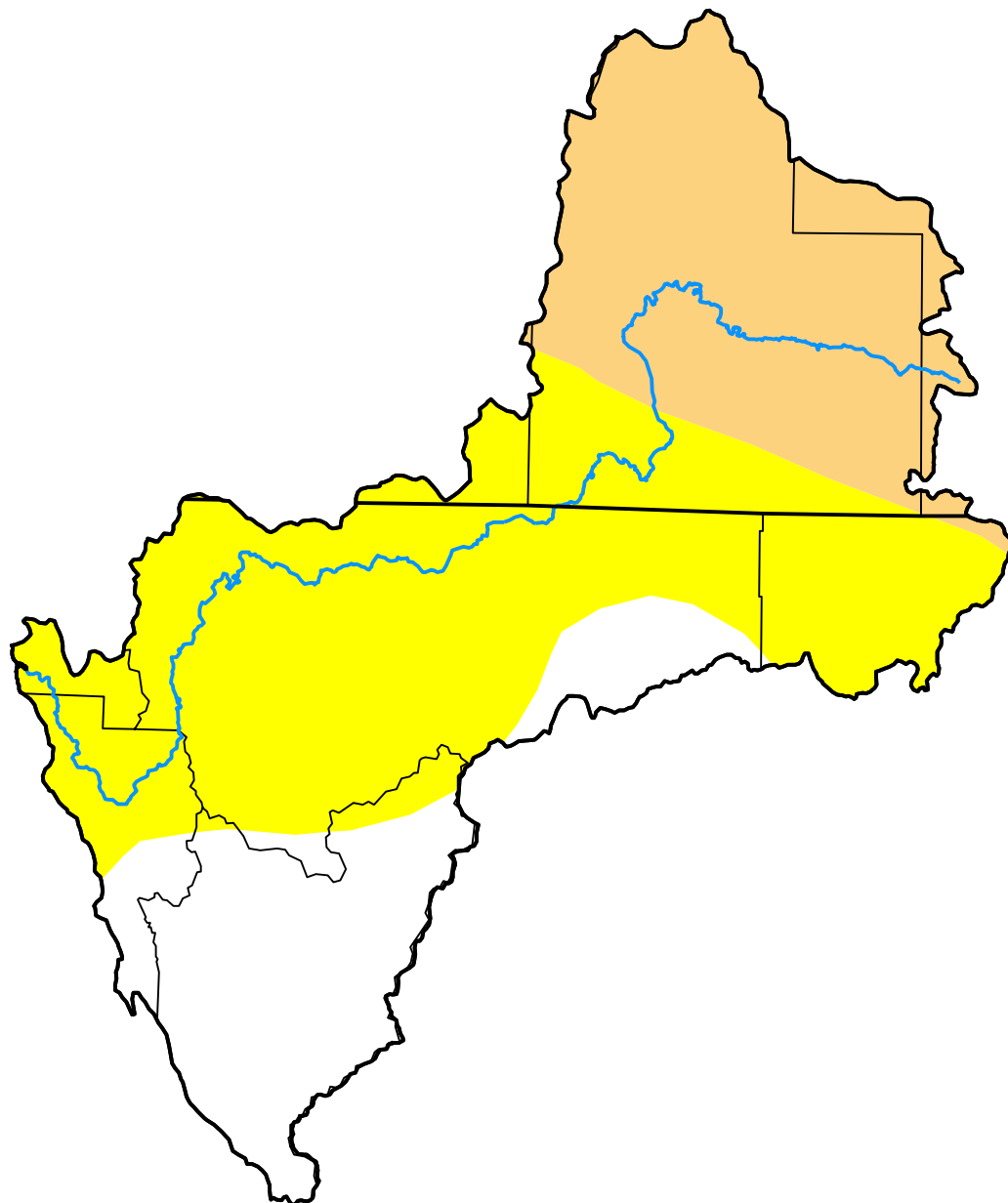
## Klamath River Basin

**February 22, 2005**  
 (Released Thursday, Feb. 24, 2005)

Valid 7 a.m. EST

*Drought Conditions (Percent Area)*

	None	D0-D4	D1-D4	D2-D4	D3-D4	D4
<b>Current</b>	21.43	78.57	28.23	0.00	0.00	0.00
<b>Last Week</b> <i>02-15-2005</i>	21.43	78.57	28.23	0.00	0.00	0.00
<b>3 Months Ago</b> <i>11-23-2004</i>	47.93	52.07	17.07	0.28	0.00	0.00
<b>Start of Calendar Year</b> <i>01-04-2005</i>	76.59	23.41	8.48	0.00	0.00	0.00
<b>Start of Water Year</b> <i>09-28-2004</i>	35.84	64.16	17.52	0.28	0.00	0.00
<b>One Year Ago</b> <i>02-24-2004</i>	93.81	6.19	0.00	0.00	0.00	0.00



Intensity:

- None
- D0 Abnormally Dry
- D1 Moderate Drought
- D2 Severe Drought
- D3 Extreme Drought
- D4 Exceptional Drought

*The Drought Monitor focuses on broad-scale conditions. Local conditions may vary. For more information on the Drought Monitor, go to <https://droughtmonitor.unl.edu/About.aspx>*

Author:

Richard Heim  
 NCEI/NOAA

