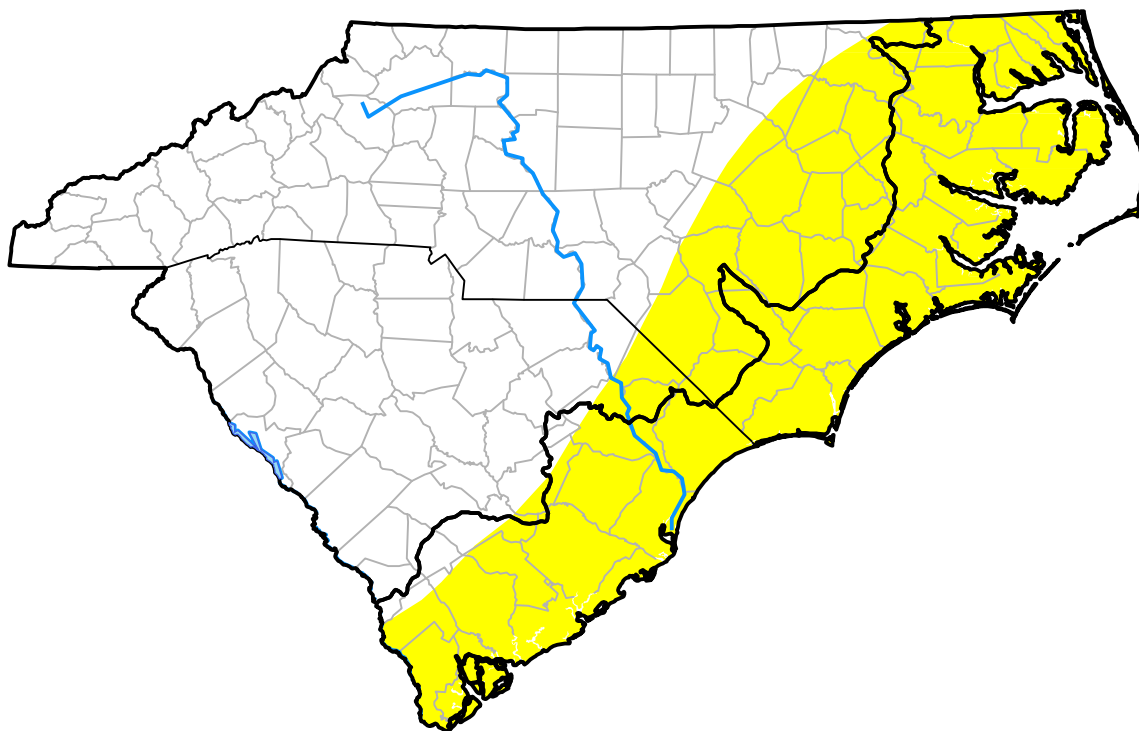


U.S. Drought Monitor

Coastal Carolinas RDEWS

March 15, 2005
(Released Thursday, Mar. 17, 2005)
 Valid 7 a.m. EST



Drought Conditions (Percent Area)

	None	D0-D4	D1-D4	D2-D4	D3-D4	D4
Current	0.36	99.64	0.00	0.00	0.00	0.00
Last Week <i>03-10-2005</i>	0.36	99.64	0.00	0.00	0.00	0.00
3 Months Ago <i>12-16-2004</i>	100.00	0.00	0.00	0.00	0.00	0.00
Start of Calendar Year <i>01-06-2005</i>	100.00	0.00	0.00	0.00	0.00	0.00
Start of Water Year <i>09-30-2004</i>	100.00	0.00	0.00	0.00	0.00	0.00
One Year Ago <i>03-18-2004</i>	100.00	0.00	0.00	0.00	0.00	0.00

Intensity:



The Drought Monitor focuses on broad-scale conditions. Local conditions may vary. For more information on the Drought Monitor, go to <https://droughtmonitor.unl.edu/About.aspx>

Author:

Michael Hayes
 National Drought Mitigation Center

