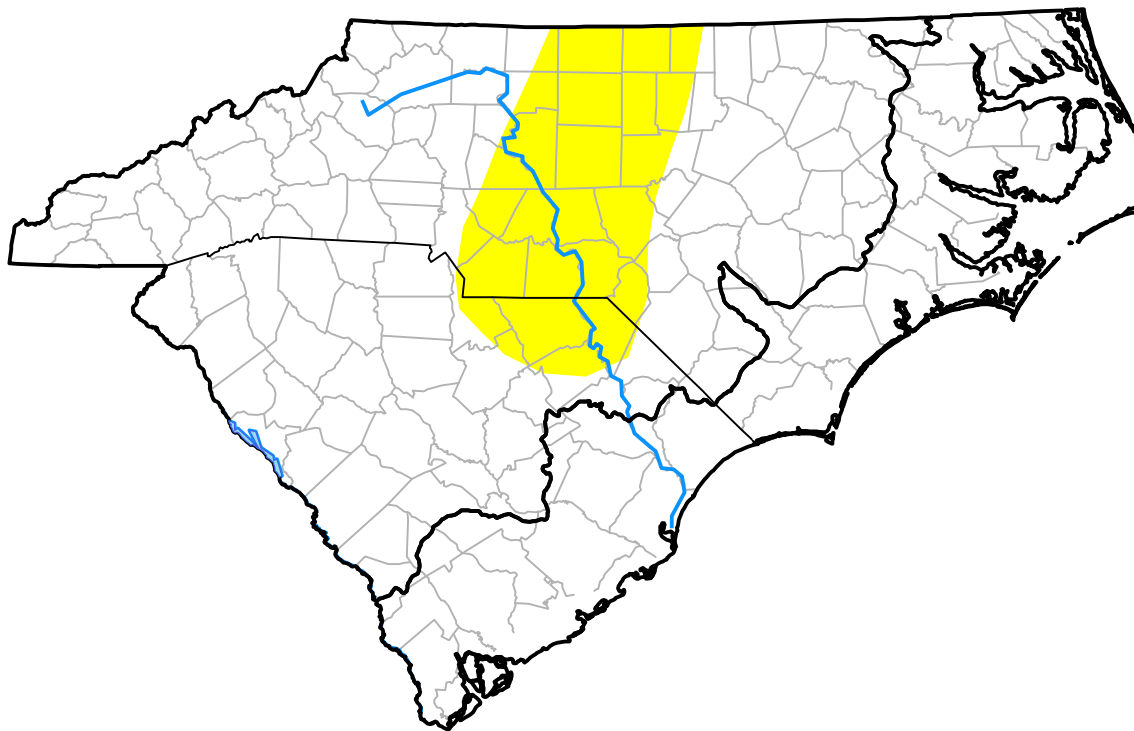


# Carolinas RDEWS and Surrounding Areas

Drought Conditions (Percent Area)

	None	D0	D1	D2	D3	D4
<b>Current</b>	85.76	14.24	0.00	0.00	0.00	0.00
<b>Last Week</b> <i>05-19-2005</i>	84.39	15.61	0.00	0.00	0.00	0.00
<b>3 Months Ago</b> <i>02-24-2005</i>	90.53	9.47	0.00	0.00	0.00	0.00
<b>Start of Calendar Year</b> <i>01-06-2005</i>	100.00	0.00	0.00	0.00	0.00	0.00
<b>Start of Water Year</b> <i>09-30-2004</i>	100.00	0.00	0.00	0.00	0.00	0.00
<b>One Year Ago</b> <i>05-27-2004</i>	48.59	23.20	19.39	8.82	0.00	0.00



Intensity:

- None
- D0 Abnormally Dry
- D1 Moderate Drought
- D2 Severe Drought
- D3 Extreme Drought
- D4 Exceptional Drought

The Drought Monitor focuses on broad-scale conditions. Local conditions may vary. For more information on the Drought Monitor, go to <https://droughtmonitor.unl.edu/About.aspx>

Author:

Brad Rippey  
U.S. Department of Agriculture

